

---

## How to Use Template Files in EKPrint® Studio™

**AnaJet®**  
Technical Support

Revision 1.0  
November 15, 2010

## *Contact Info*

---

Corporate Office: **AnaJet Inc.**  
**3050 Redhill Ave**  
**Costa Mesa, CA 92626**  
**USA**

Telephone: **714.662.3200**  
Toll Free: **877-6-ANAJET (877.626-2538)**  
Fax: **714.662.3600**

Email: [Click here to inquire about AnaJet products](#)  
For general inquiry: [info@anajet.com](mailto:info@anajet.com)  
For dealership inquiry: [bizdev@anajet.com](mailto:bizdev@anajet.com)

## *Revision History*

---

<b>Revision</b>	<b>Description</b>	<b>Author</b>	<b>Date</b>
1.0	Initial release.	<b>Tim Bellante</b> – Author Member, Technical Support <b>Steeve Jacobs</b> – Author Training Manager <b>Mike McCulty</b> – Editor Director of Customer Relations	November 15, 2010

## *Introduction*

---

This document contains instructions on how to apply EKPrint Studio™ template files (.ekt) to your images. These templates will automatically adjust the settings within EKPrint Studio™ based upon the general type of image you will be printing. Keep in mind that these settings may not be the perfect setting for your particular image but in the very least they will generate a useful starting point from which additional adjustments can be made.

## *Scope*

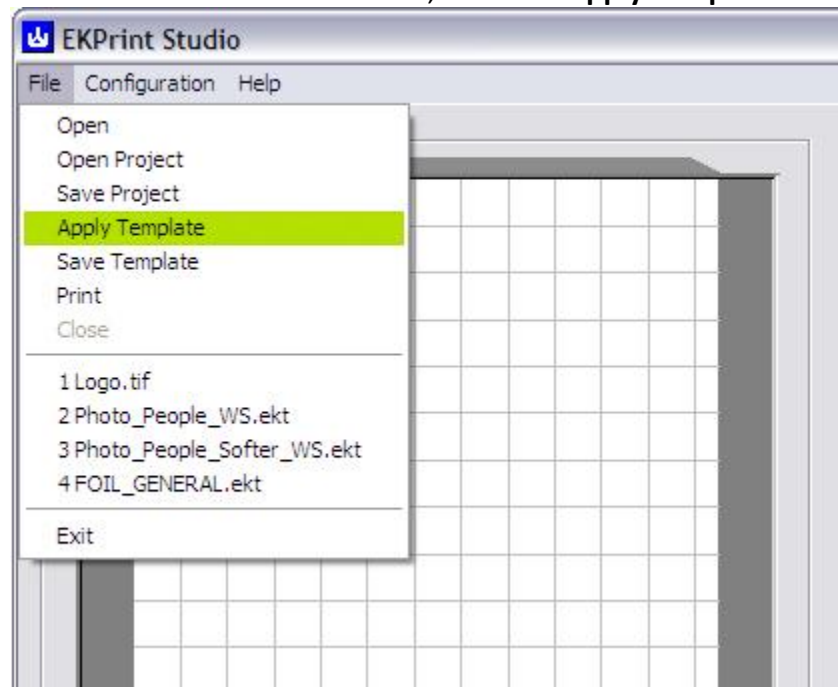
---

This document is intended for use with both AnaJet® SPRINT™ and AnaJet® FP-125™ models of printer. The following was tested using EKPrint Studio™ versions 2.10 and 3.3.

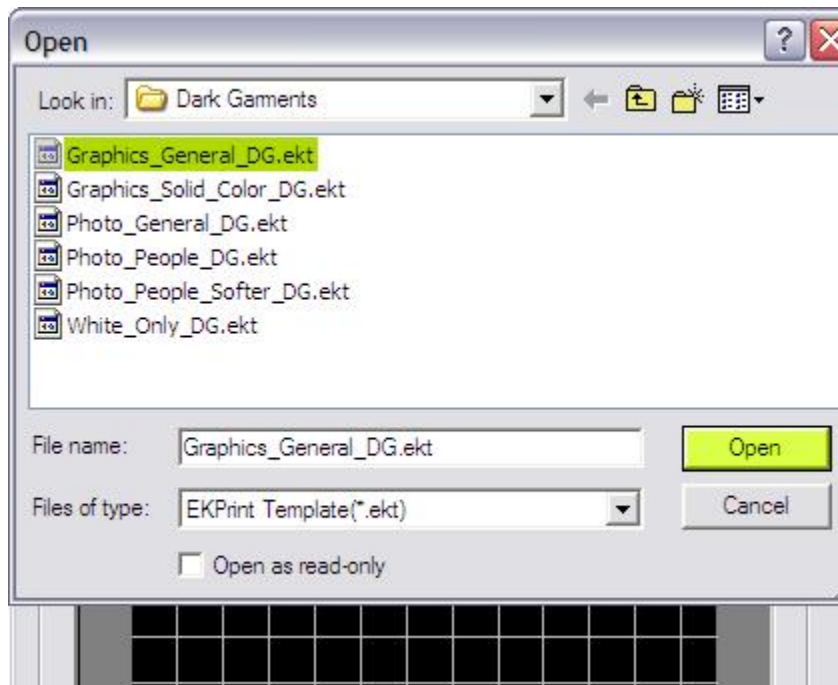
## *Using Template Files in EKPrint® Studio™*

---

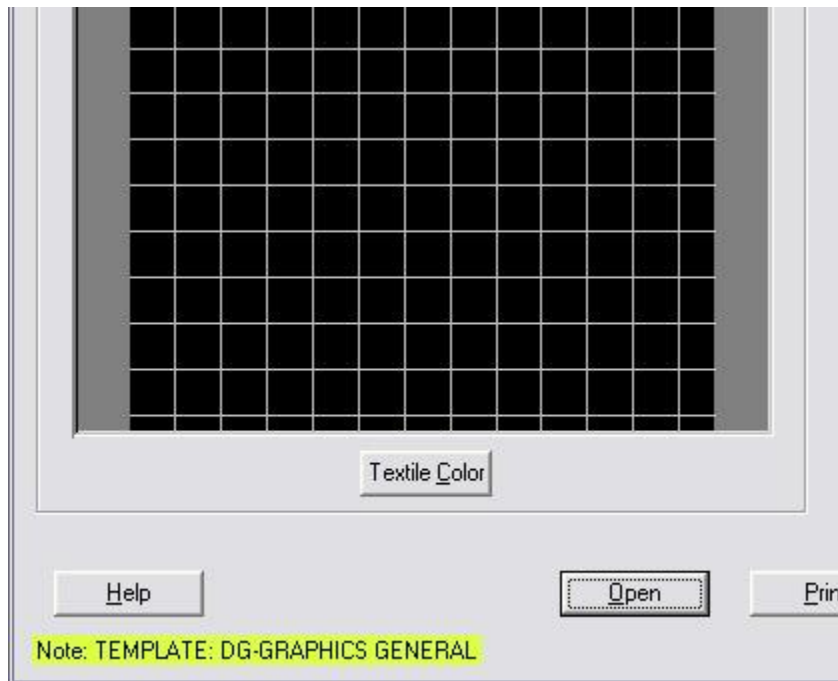
Applying a premade template is a very easy process. First open your graphic file then on the menu bar select **File**, and then **Apply Template**.



Navigate to the location of the template type you would like to use then select the template file and click open.



You will know your template has loaded when you see a note on the bottom left corner of EKPrint Studio™ as highlighted below.



## *AnaJet Template Library*

---



### **DARK GARMENT GRAPHICS GENERAL**

*Template File name:* Graphics\_General\_DG.ekt

*Usage:* For general non-photographic images with various shades and gradients of color on dark garments.

*Tips:* The White Ink Underbase has been set to Content Based with the Contrast Slider set to -40. Default setting would be -35 on the Contrast Slider.



### **DARK GARMENT GRAPHICS SOLID COLORS**

*Template File name:* Graphics\_Solid\_Color\_DG.ekt

*Usage:* For non-photographic images with solid colors on dark garments.

*Tips:* The White Ink Underbase has been set to Content Based with the Contrast Slider set to -45. Default setting would be -35 on the Contrast Slider. Color Prints in Superfine Quality mode.

---



### **DARK GARMENT PHOTOS**

*Template File name:* Photo\_General\_DG.ekt

*Usage:* For general color range photographs without transparencies for printing on dark garments

---



### **DARK GARMENT PHOTOS OF PEOPLE**

*Template File name:* Photo\_People\_DG.ekt

*Usage:* For non-transparent photographs of people to be printed on dark garments.



**DARK GARMENT PHOTOS OF PEOPLE WITH A SOFTER LOOK**

*Template File name:* Photo\_People\_Softer\_DG.ekt

*Usage:* For non-transparent photographs to be printed on dark garments that need a softer look. This template works well for subtle skin tones.

---



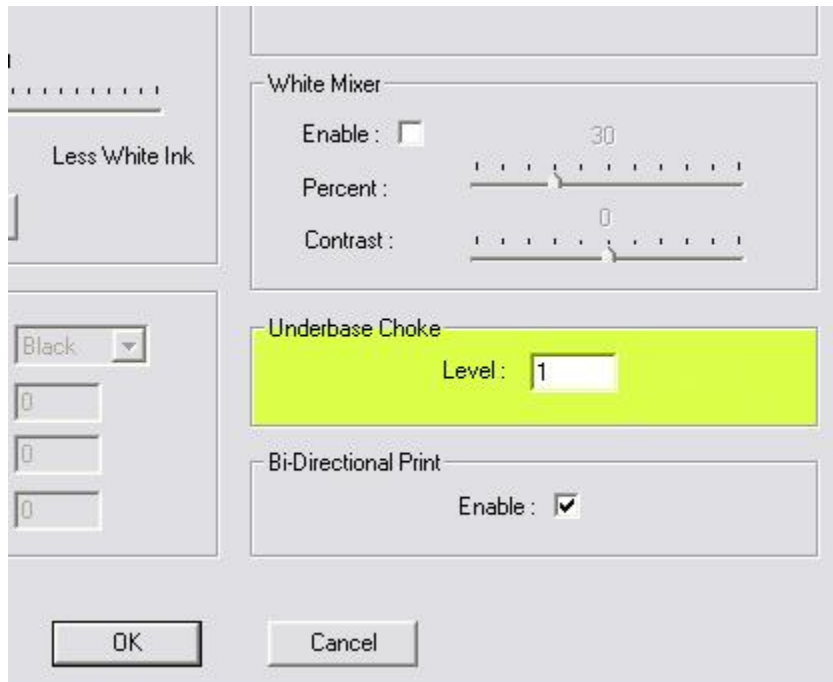
**DARK GARMENT WHITE INK ONLY**

*Template File name:* White\_Only\_DG.ekt

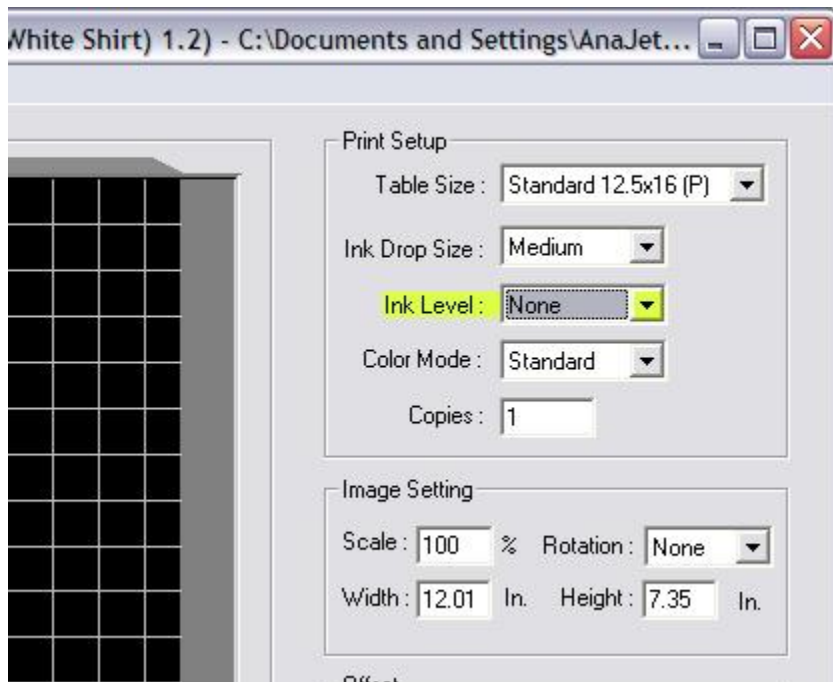
*Usage:* For a printing white only text or graphics on dark garments.

*Tips:* The Underbase Choke Level set to 1. The Underbase Choke setting shrinks the outside dimension of the underlayment by removing the specified number of pixels from the outside edges of the image, ranging between 1-40. The higher the Level number, the more pixels are removed. Because this is a white only print and we want the image to remain unchanged a setting of Level 1 is used.





Also notice that the ink level on the main setting preview window of EKPrint Studio™ is set none. This will disable the printing of a color pass.







---

**WHITE GARMENT GRAPHICS GENERAL**

*Template File name:* Graphics\_General\_WS.ekt

*Usage:* For general non-photographic images with various shades and gradients of color.



---

**WHITE GARMENT GRAPHICS SOLID COLORS**

*Template File name:* Graphics\_Solid\_Color\_WS.ekt

*Usage:* For non-photographic images with solid colors.

*Tips:* Prints in Superfine Quality mode.



**LIGHT GARMENT PHOTOS PEOPLE**

*Template File name:* Photo\_People\_WS.ekt

*Usage:* For photographs of people on light garments

---



**LIGHT GARMENT PHOTOS PEOPLE SOFTER**

*Template File name:* Photo\_People\_SofterWS.ekt

*Usage:* For photographs of people that require softer skin tones.

---



**LIGHT GARMENT GENERAL PHOTO**

*Template File name:* Photo\_General\_WS.ekt

*Usage:* For general printing of photographs.

---



**FOIL PRINTING**

*Template File name:* FOIL\_GENERAL.ekt

*Usage:* Ink settings for using metallic foil on garments.

*Tips:* The amount of ink used when printing foil is very important. A small amount of white under base is used with a heavy-color pass. **Remember since white ink is being used Pretreatment of the garment is required.**