
AnaJet Sprint Print Head Replacement



Technical Support

Version #1.2
Date: 8/19/2013



Contact Info

Corporate Office: **AnaJet Inc.**
3050 Redhill Ave
Costa Mesa, CA 92626
USA

Telephone: **714.668.6000**
Toll Free: **877-6-ANAJET (877.626-2538)**
Fax: **714.662.3600**

Revision History

Revision	Description	Author	Date
1.1	Initial release.	Eddie – Tech support	4/16/2009
1.2	Added Step	Ray Larason – Domestic Technical Support Manager	8/19/2013

AnaJet Sprint Print Head Replacement

Introduction

This is a guide on how to replace the Print Head in the AnaJet Sprint printer.

Scope

This applies to AnaJet Sprint Printers only.

Symptoms

The print head is clogged or damaged beyond repair and must be replaced.

Step by Step Guide

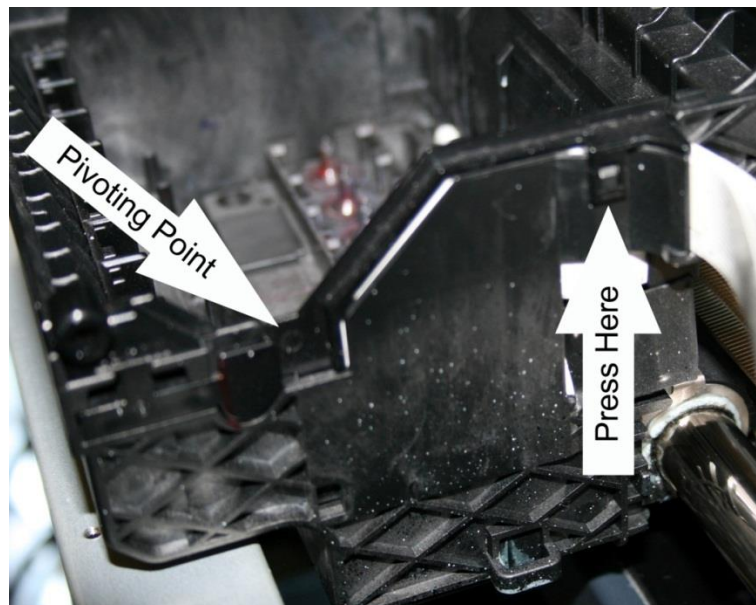
The Print Head is very static sensitive; use antistatic protective equipment.

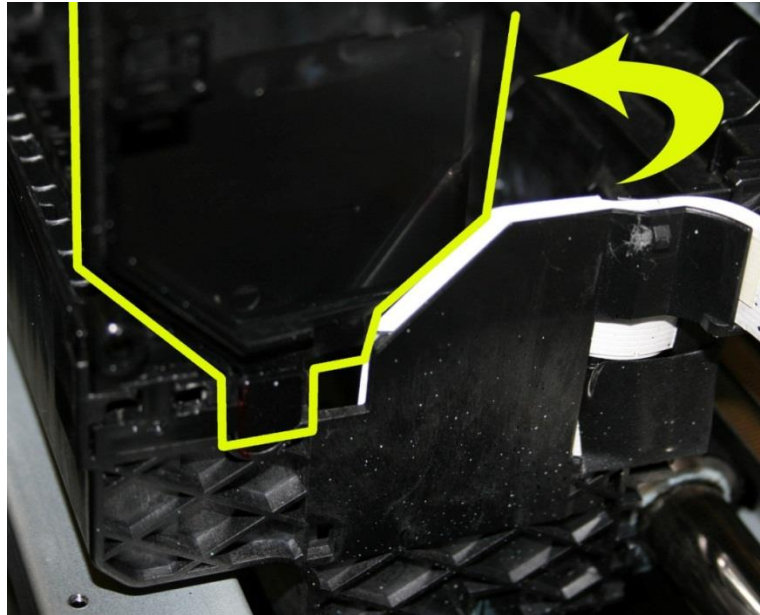
Before beginning this repair make sure the power is turned off at the back switch and the printer's power cord is unplugged.

1. Remove the Dampers [See Damper replacement]. To avoid ink leaking, place Dampers and Ink Tubes higher than the level of the Ink Cartridge.

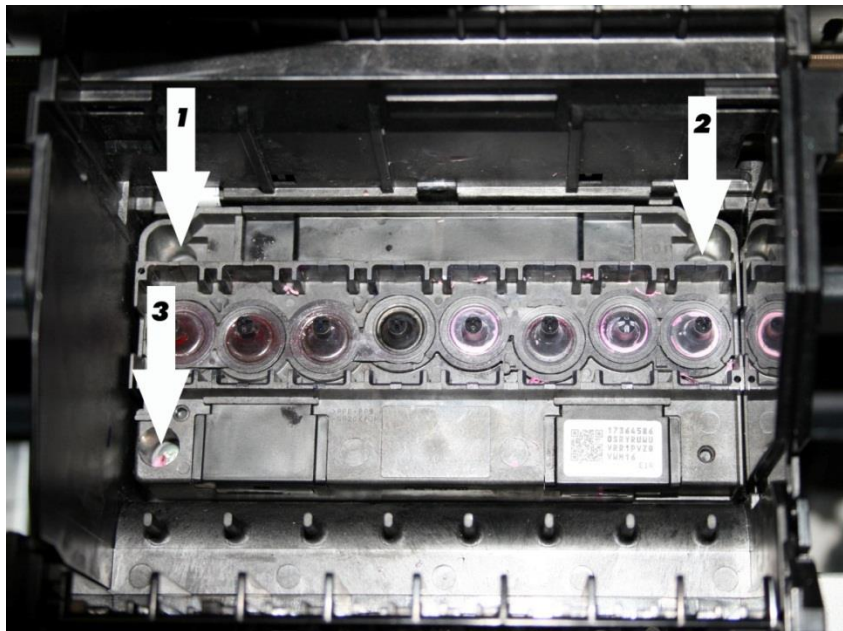


2. Release the Print Head Carriage and move it away from the right side of the chassis, see User Manual page.
3. Remove the Flat Flex Cable (FFC) Guide from the Print Head Carriage by releasing the upper tab and then rotating the guide forward.

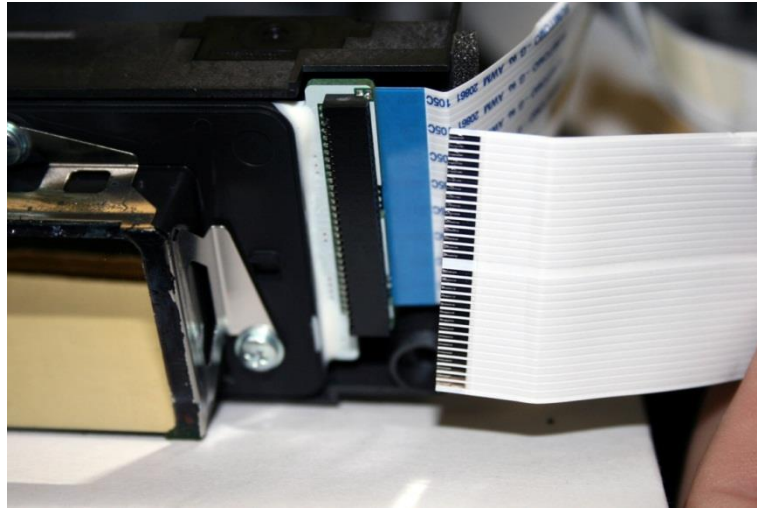




4. Remove the three M2.6 X 8 screws securing the Print Head. Lift the Print Head straight up to remove.



5. Disconnect the two FFC from the removed Print Head. Make sure to keep them in the same order by replacing them one at a time.



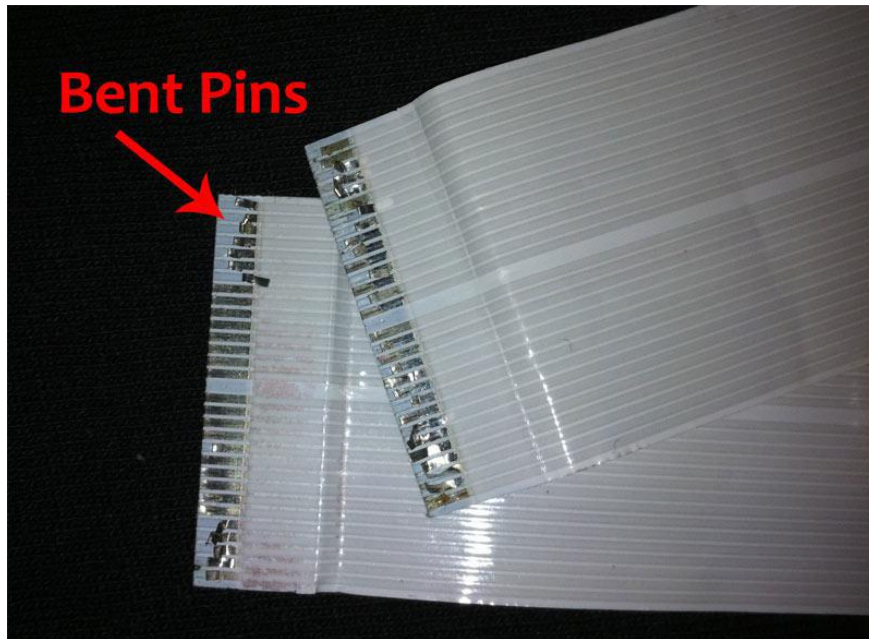
Reassembly

1. Check to make sure the Foam Pad is attached to the end of the Print Head.



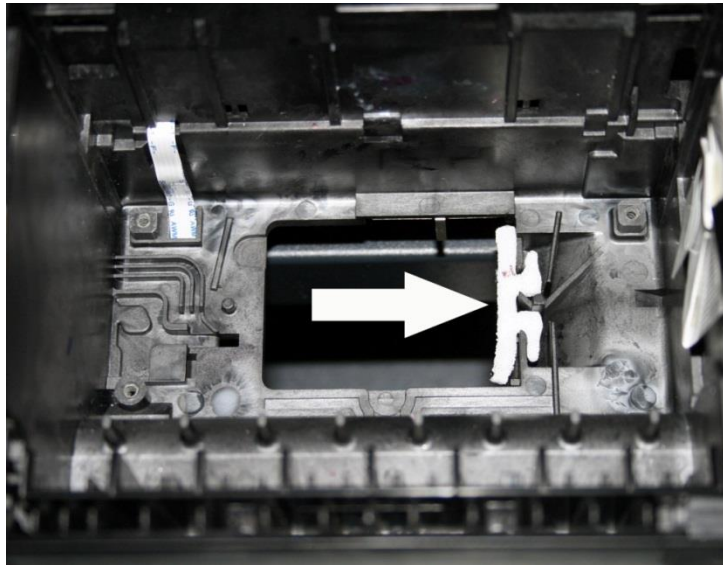
Check that the Foam Dam is properly positioned on the right guide pin.

Inspect the contact pins of the two FFC for bent pins, ink residue, or corrosion.

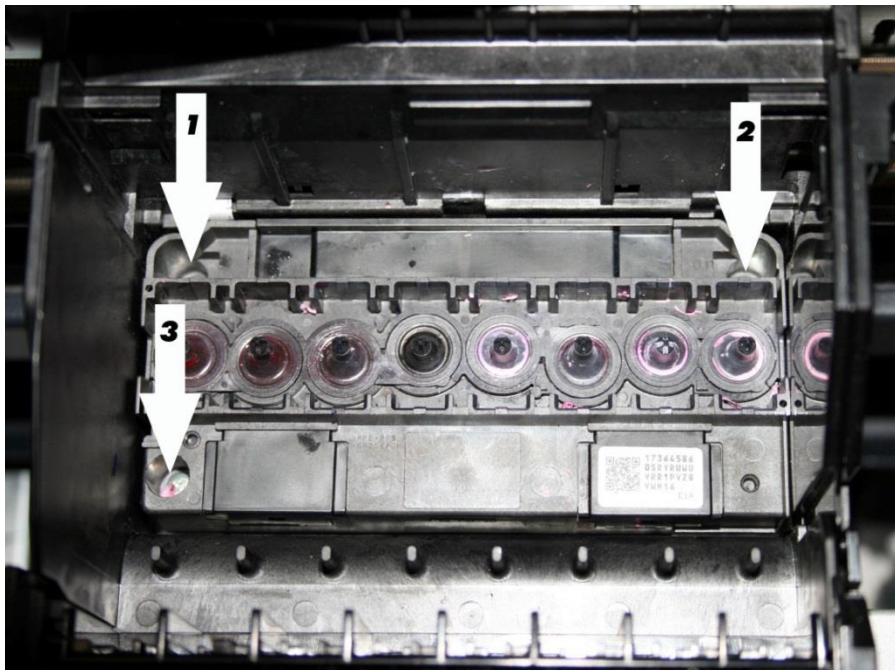


If your print head cable pins resemble signs of bent pins, or corrosion. **DO NOT PROCEED ANY FURTHER WITH YOUR PRINTHEAD INSTALLATION AND CALL ANAJET TECH SUPPORT IMMEDIATELY AT (714) 662-3200 AND PRESS 3**





2. Reassemble the Print Head by reversing the removal steps. When reinstalling the screws, use care to re-enter the same thread originally formed in the plastic carriage. While tightening the screws press the Print Head toward the rear of the unit. Tighten the screws in the order shown in the photo below . Tighten the screws to 10 to 15 N cm (14 to 21 in ozf).



3. Reassemble the Dampers and Damper Retainer.



4. Before powering up the printer, make sure the Print Head is all the way to the left, then perform an Ink Charge and check for nozzle performance.