

**RICOH**

RICOH

Ri 1000

X Encoder Strip  
Replacement



# Ri 1000 Replace X Encoder Strip

## ***Introduction***

This TD&R document is intended to aid RICOH Ri 1000 users in providing maintenance and basic repair service. The information provided is intended to help with performing an X Encoder Strip replacement. Accordingly, this TD&R document is limited to meet the objectives indicated above.

The majority of the hardware used in the RICOH Ri 1000 Direct to Garment printer is in Metric series.

When performing maintenance on the machine, be sure to wear commercially available goggles, gloves and a mask.

## ***Scope***

This applies to RICOH Ri 1000 printers.

## ***Symptoms/When To Replace***

1. CR encoder error appears and can not be cleared and there are scratches and or stains that cannot be cleaned

## ***Supplies***

Required supplies:

1. Power Supply Unit (J1021854)
2. #1 Phillips Head Screwdriver

## Ri 1000 Replace X Encoder Strip

### **WARNING:**

Be sure to wear an anti-static grounding strap when handling any circuit board components.



## Ri 1000 Replace X Encoder Strip

### Before you Begin








#### **Do NOT install part(s) until you have completed the following:**

- Read this document and all accompanying documentations for this printer before use.
- Contact your Ricoh supplier prior to installation if any information is unclear or if you have any questions.
- Follow all safety precautions as outline by user manual, and this manual and quick installation guide as well as the following general guidelines:
  - Avoid contact with any sharp edges that are exposed during part installation process.
  - Ensure that main power switch in the back is turned off until installation is complete and disconnect the power cord from the machine.
  - Ensure proper grounding via straps when handling any electrical components.
  - Keep all components, *especially any electrical components*, dry during installation.
  - Double check that no components have been inadvertently exposed to ink (via splash/spill/etc.).
  - Wipe/remove/dry ink prior to powering up machine.

## Ri 1000 Replace X Encoder Strip

### Safety Symbols for This Machine

The meanings of the safety symbols for this machine are as follows:

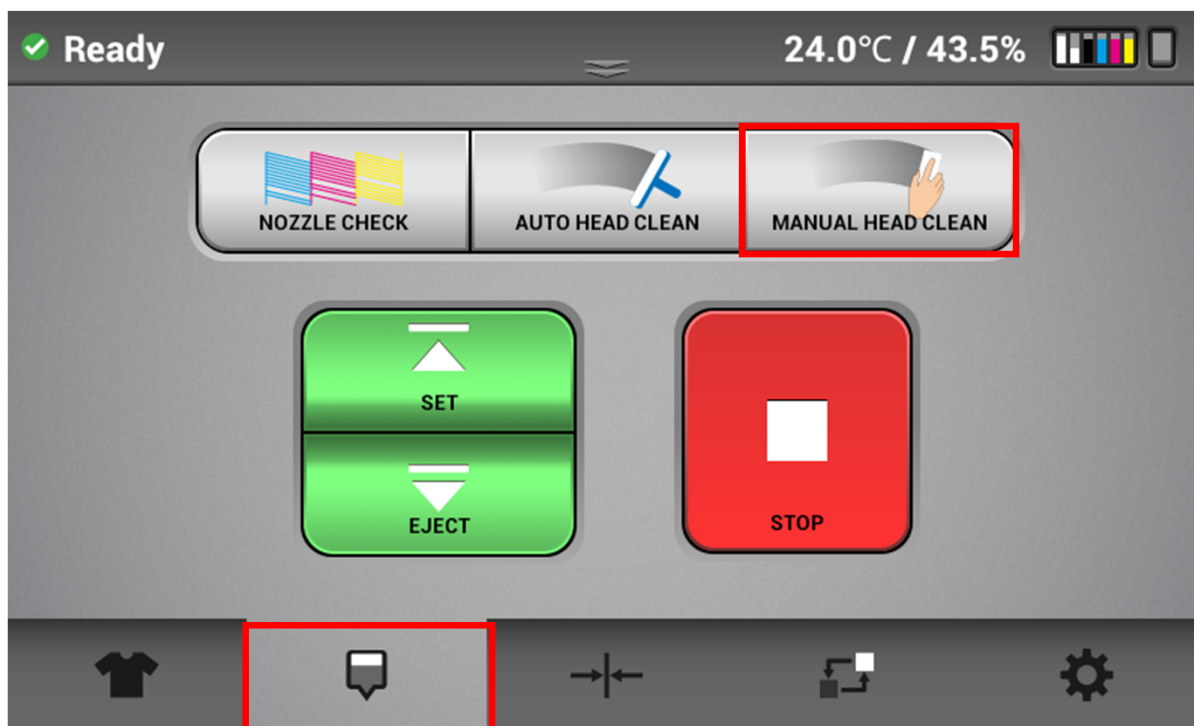
	Caution
	Prohibition
	General mandatory action sign
	Do not touch
	Caution, risk of having hands or arms caught
	Caution, risk of electric shock
	Printer Lifting Hand Position Indicator

## Ri 1000 Replace X Encoder Strip

1. Go to the Nozzle Maintenance Tab

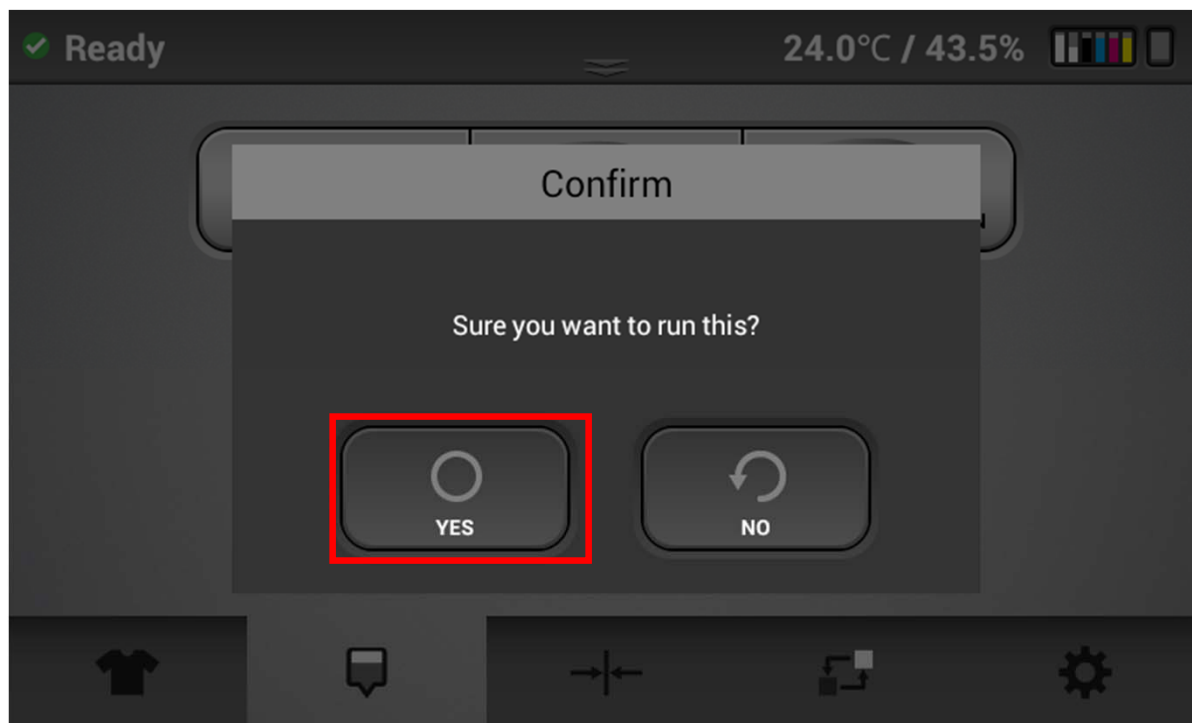


2. Select MANUAL HEAD CLEAN



## Ri 1000 Replace X Encoder Strip

3. Select YES

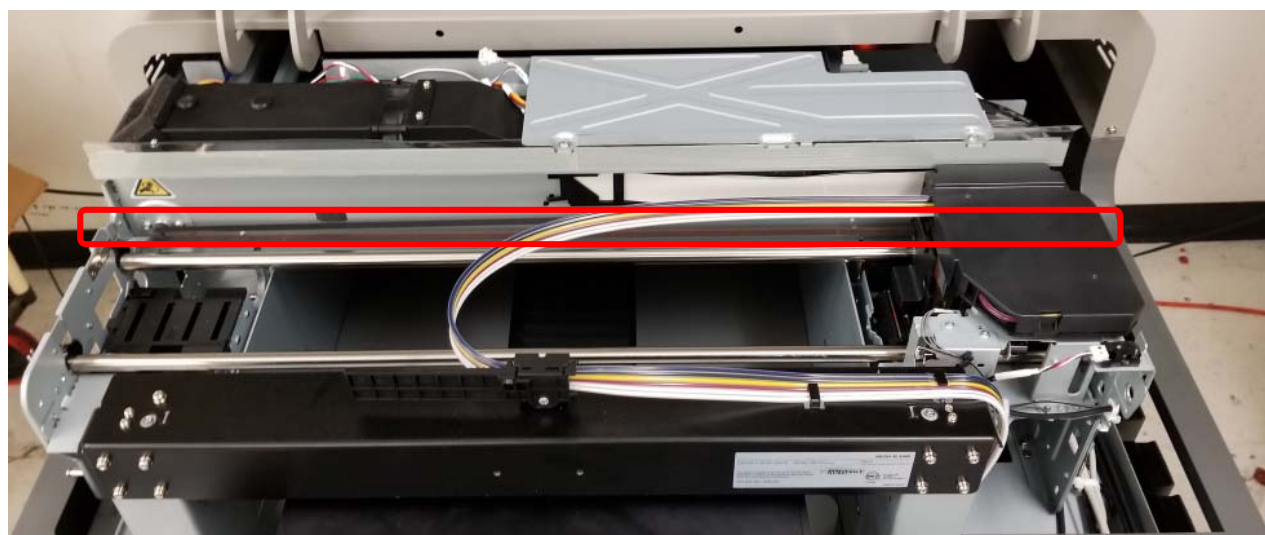


## Ri 1000 Replace X Encoder Strip

4. Turn off the printer and flip the power switch to the “off” position



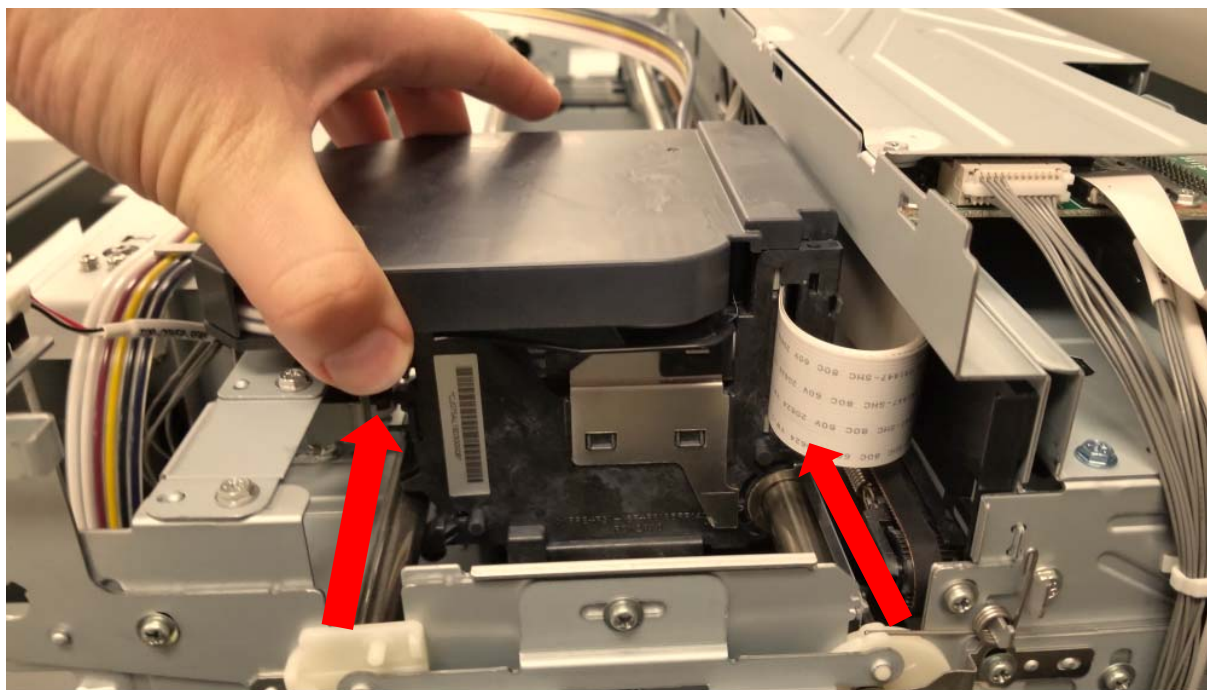
5. Open the lid of the printer





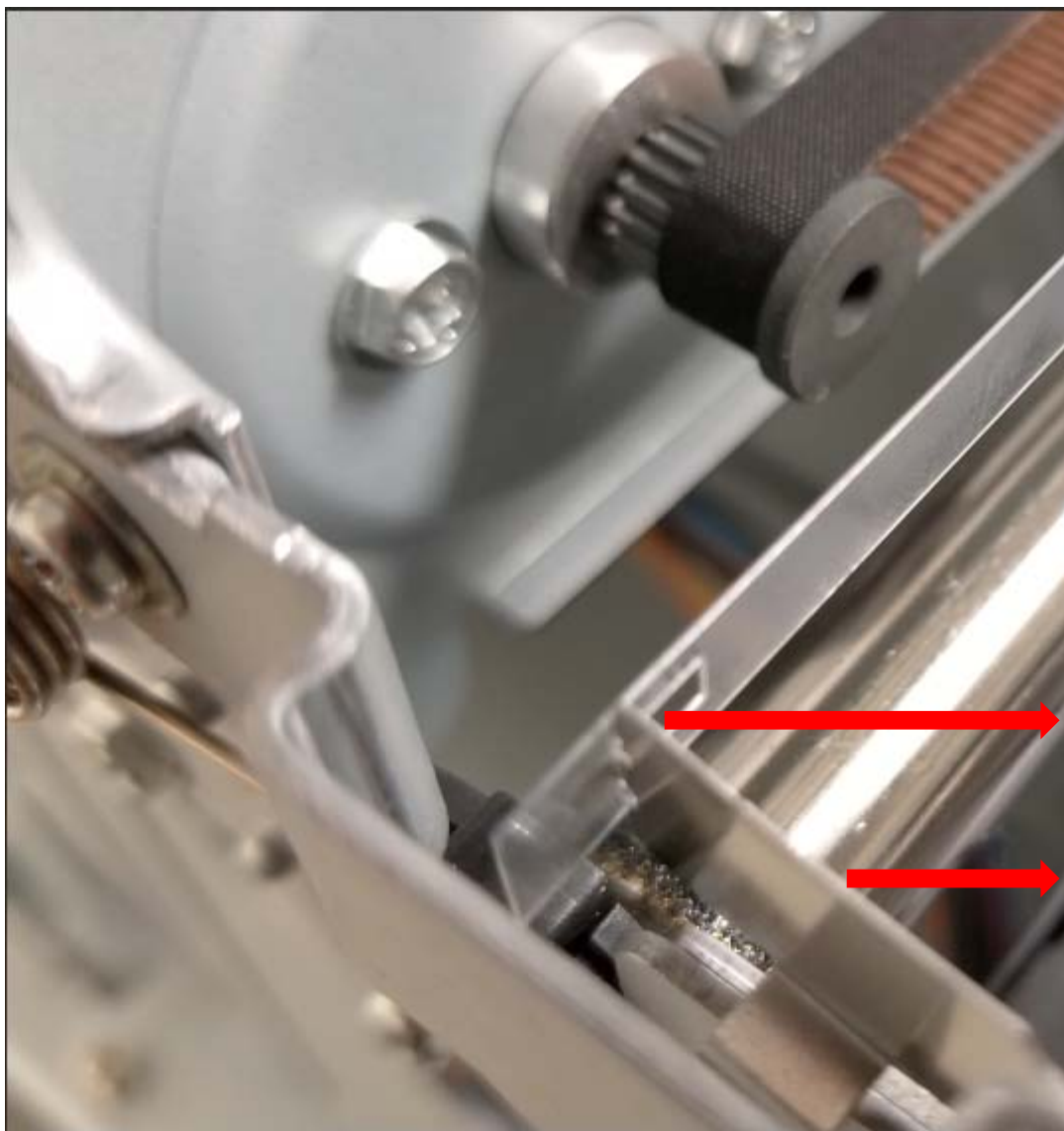
## Ri 1000 Replace X Encoder Strip

6. Push the carriage away from the maintenance unit



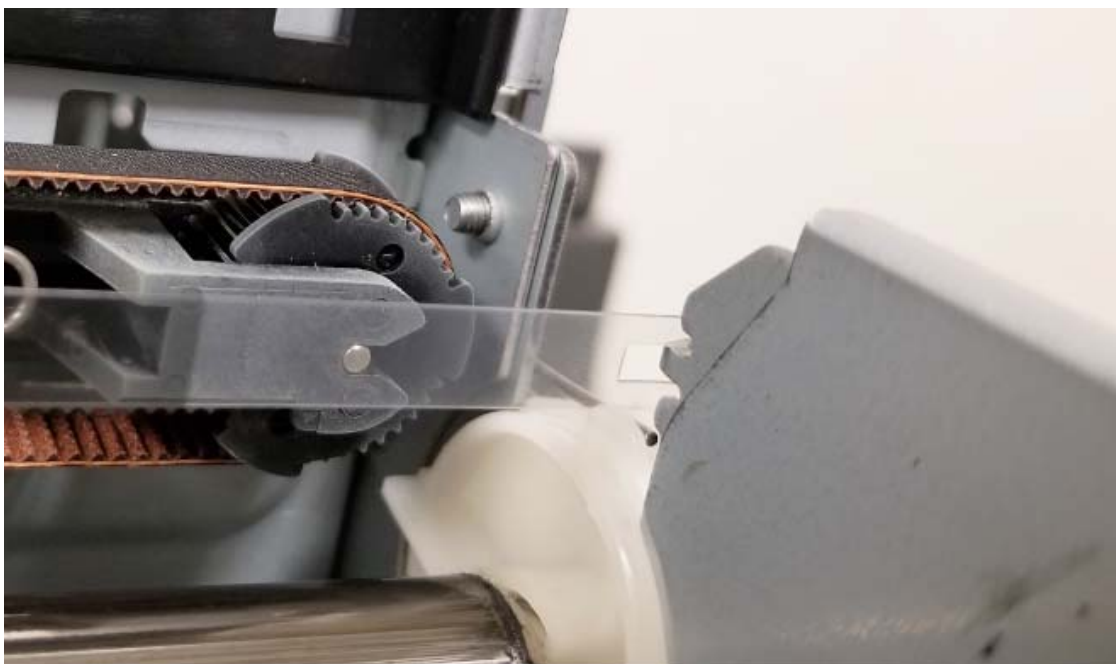
## Ri 1000 Replace X Encoder Strip

7. On left-hand side of the printer, pull back the metal spring holding the encoder strip to the right
8. Release the encoder strip from the spring



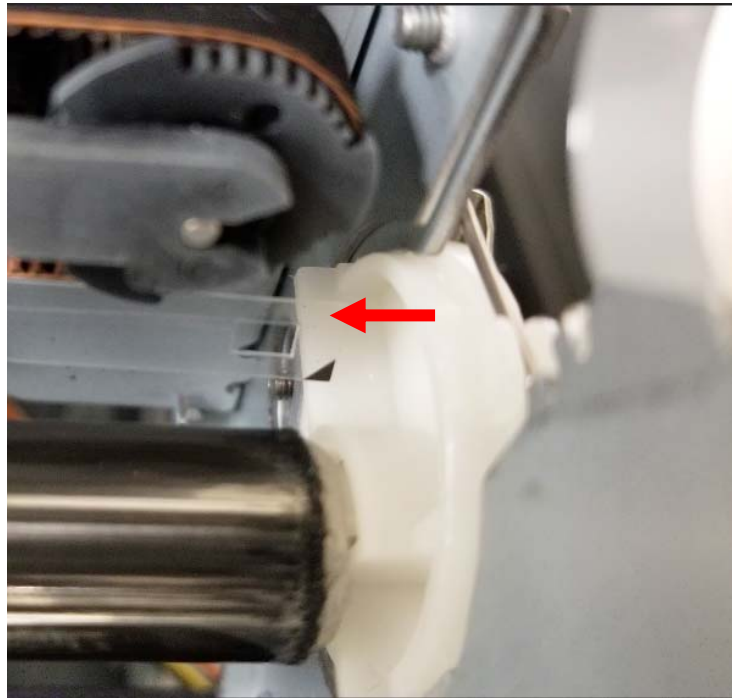
## Ri 1000 Replace X Encoder Strip

9. Pull the encoder strip out through the print head
10. Release the encoder strip from the hook on the right-hand side of the printer

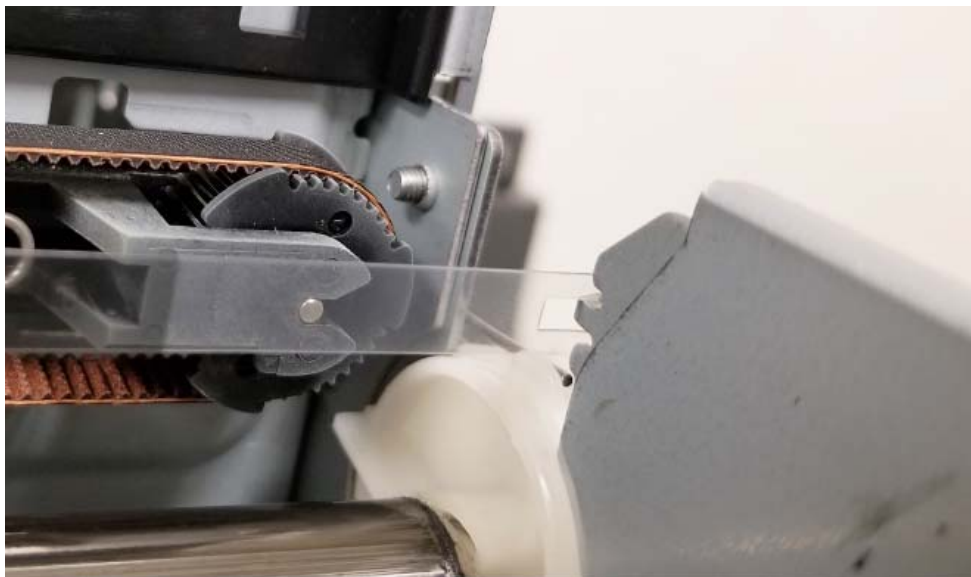


## Ri 1000 Replace X Encoder Strip

11. Insert the new encoder strip, with the mark located in the bottom right-hand corner of the strip, through the print head and hold on both ends of the encoder strip to prevent dragging. Note: Metal encoder strip has notch cut-out instead of black triangle mark pictured below.

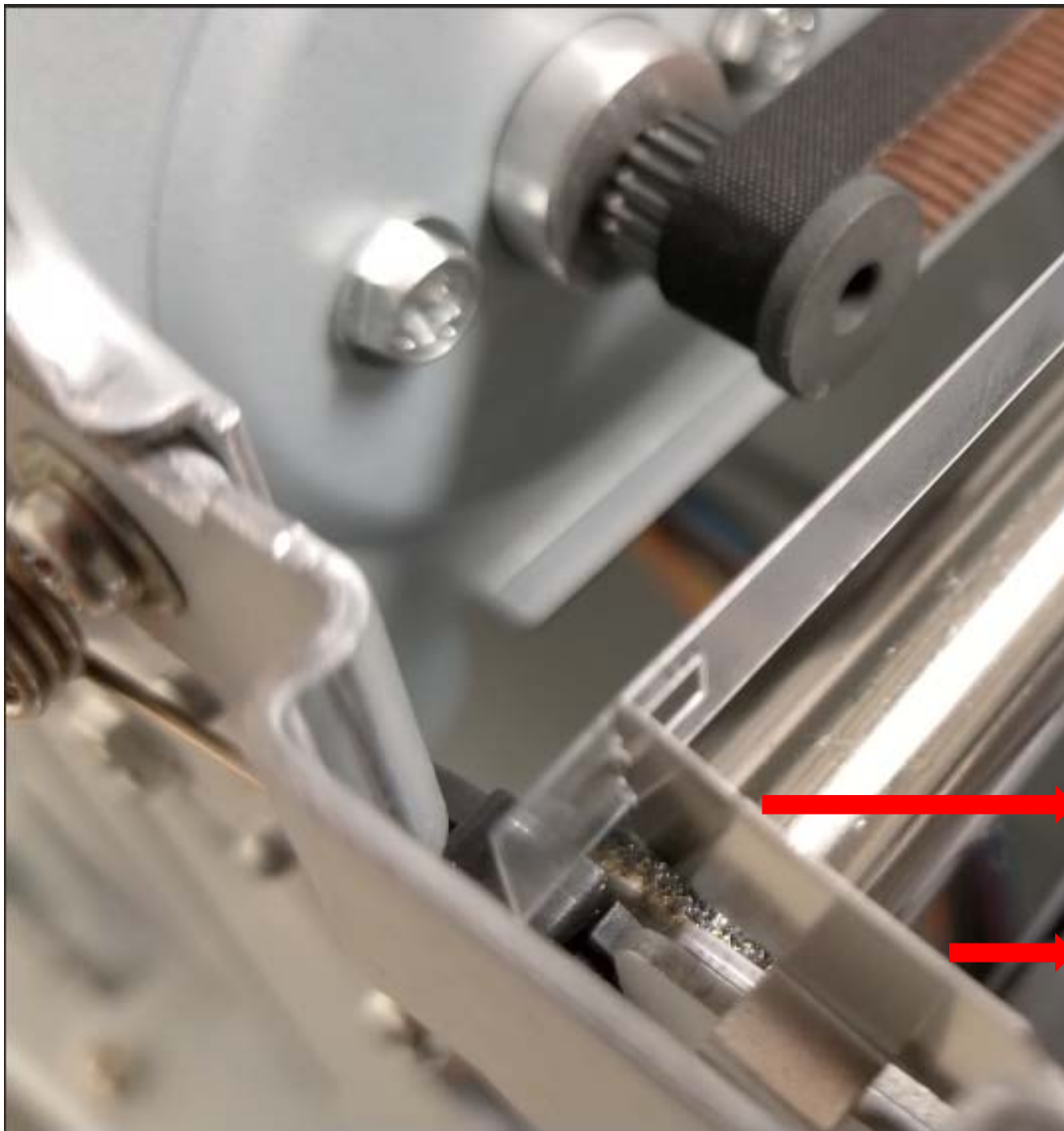


12. Secure the encoder strip from the hook on the right-hand side of the printer



## Ri 1000 Replace X Encoder Strip

13. On left-hand side of the printer, pull back the metal spring that holds the encoder strip to the right



14. Attach the encoder strip to the spring

## Ri 1000 Replace X Encoder Strip

15. Flip the power switch to the “on” position and turn on the printer
16. Close the lid of the printer



## Ri 1000 Replace X Encoder Strip

### **Caution:**

- Verify that the part was installed correctly:
  - CR encoder does not appear
  - Perform the head alignment procedure as outlined in the user manual