

**RICOH**

# RICOH Ri2000

## Option Platen

## User Guide

For Hat Platen/Shoe Platen/Sleeve Platen



**Original instructions**

# TABLE OF CONTENTS

<b>TABLE OF CONTENTS .....</b>	<b>2</b>
<b>How to Read the Manuals .....</b>	<b>3</b>
Before You Begin.....	3
Disclaimer .....	3
Notes.....	3
<b>1. Printing Method .....</b>	<b>4</b>
1.1. Setup Printer.....	4
1.2. Printing method for RIP .....	4
<b>2. Troubleshooting Guide .....</b>	<b>10</b>
<b>3. Appendix .....</b>	<b>11</b>
3.1. Revision history .....	11

# How to Read the Manuals

## Before You Begin...

Only appropriately trained users should operate the machine.

## Disclaimer

Contents of this manual are subject to change without prior notice.

To the maximum extent permitted by applicable laws, in no event will the manufacturer be liable for any damages whatsoever arising out of failures of this machine, losses of the registered data, or the use or non-use of this machine and operation manuals provided with it.

Make sure that you always copy or have backups of the data registered in this machine. Documents or data might be erased due to your operational errors or malfunctions of the machine.

In no event will the manufacturer be responsible for any documents created by you using this machine or any results from the data executed by you.

## Notes

Read this manual carefully before you use the machine and keep it handy for future reference.

For safe and correct use, be sure to read Safety Information before using the machine.

The manufacturer will not be responsible for any damage or expense that might result from the use of parts other than genuine parts from the manufacturer with your products.

For good output quality, the manufacturer recommends that you use genuine ink from the manufacturer.

Some illustrations in this manual may be slightly different from the machine.

Certain options may not be available in some countries. For details, please contact your local dealer. Depending on which country you are in, certain units may be optional. For details, please contact your local dealer.

# 1. Printing Method


## 1.1. Setup Printer

Refer to Ricoh Ri series Direct to Garment Printer Platen Manual.

**IMPORTANT!** The version of printer firmware (Panel GIB) must be 1.03.0 or later. If not, download the latest firmware from RICOH official website. At that time, please also update the firmware of Sub Control(SCB) and Engine(CTL) to latest version.

## 1.2. Printing method for RIP

1. Start Textile Productionserver.
2. Input the image to Textile Productionserver .
3. Please set with RIP according to the platen type.

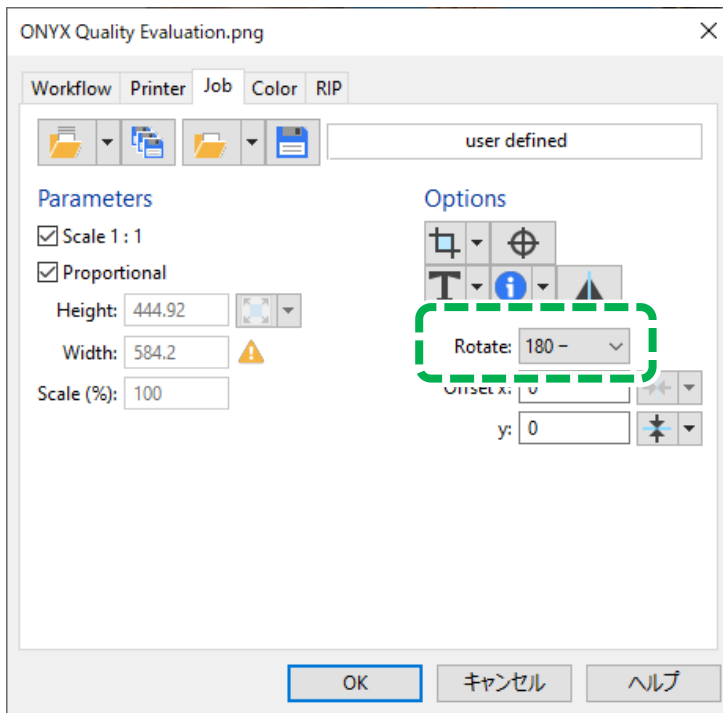
Platen type	Textile Productionserver
Hat	a) User select Media size  <b>CAUTION</b> (*1)
Sleeve	a) User select Media size
Shoe	a) User select Media size b) User set Offset/Scaling

**(CAUTION \*1)**

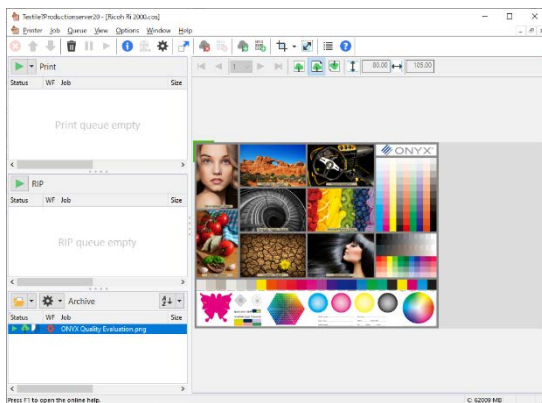
The image is printed 180 degrees inverted from the display on the Textile Productions server.

In that case, the user should set 180 degrees.

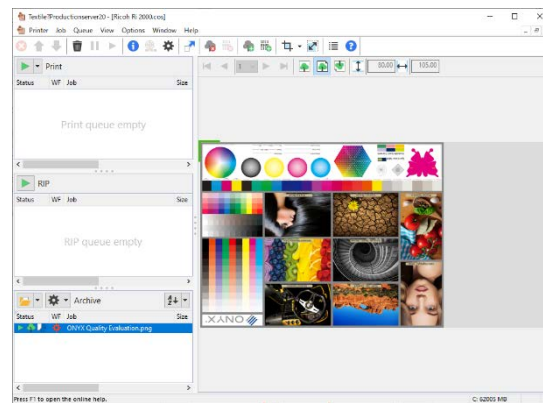
The print settings are below.



**Default Settings:**

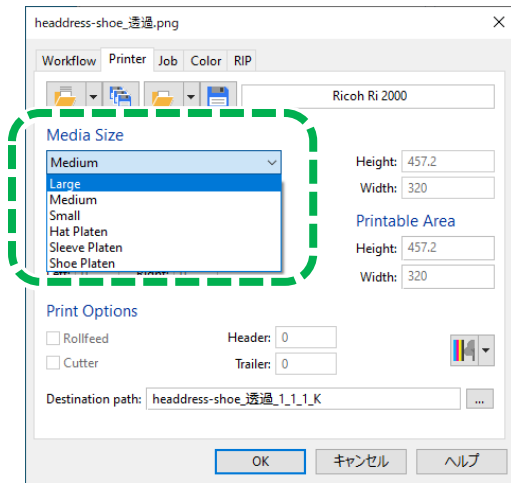


**After Set Rotate(180 degree)**



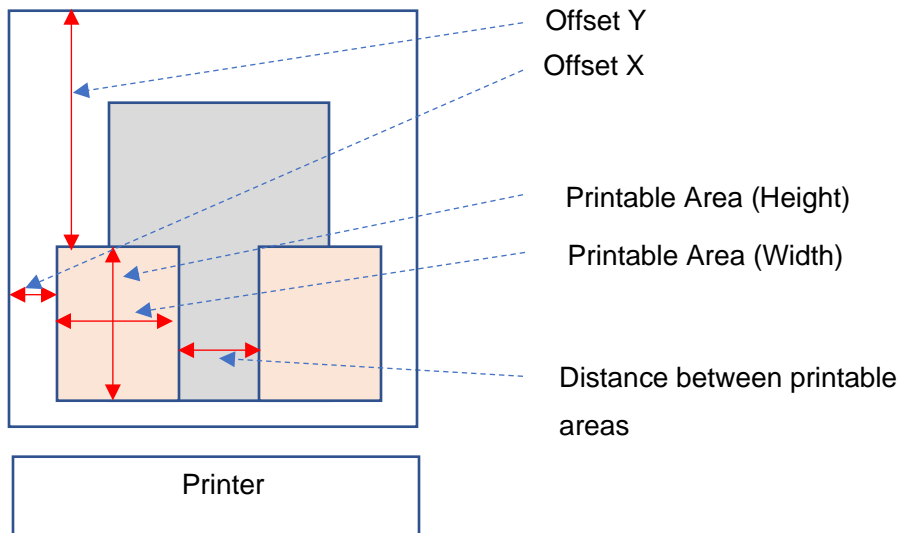
a) User select Media size.

**Textile Productionserver:**

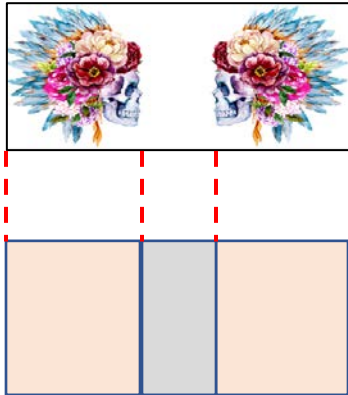


b) User set Offset/Scaling

According to type of Shoe Attachment, user set Height x Width, Offset x, y.



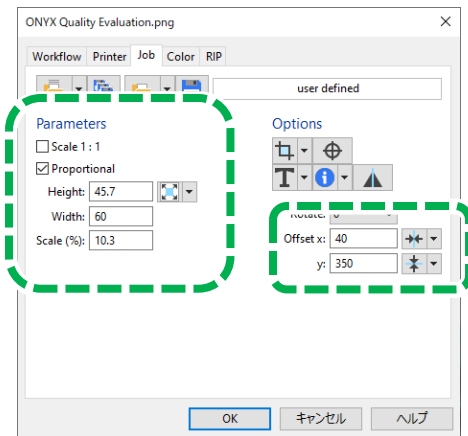
If you want to print on both feet, please prepare the following image and set Offset x,y.



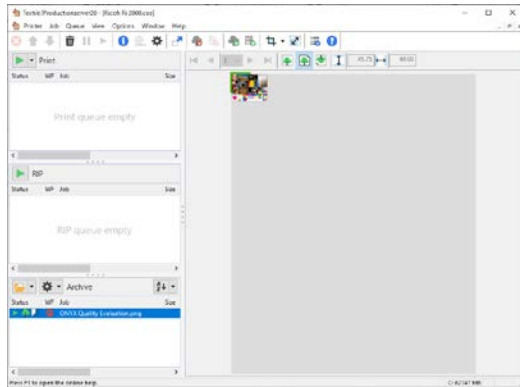
**Offset of each Shoe attachment**

Shoe Attachment	Offset	(Reference) Printable Area(Width x Height)	(Reference) Distance between printable areas
Small	X:20 Y:220	85 x 150 mm	205 mm
Medium	X:40 Y:360	50 x 50 mm	40 mm
Large	X:40 Y:350	60 x 60 mm	40 mm

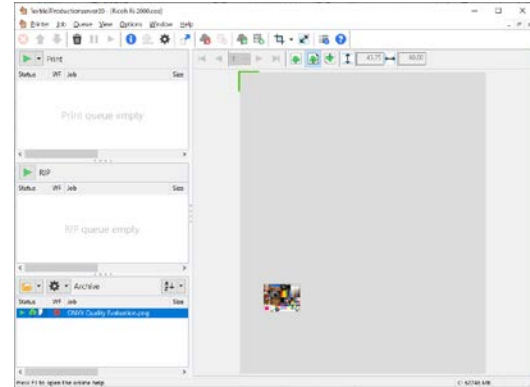
**Setting method of Textile Productions server:**



Default Settings:

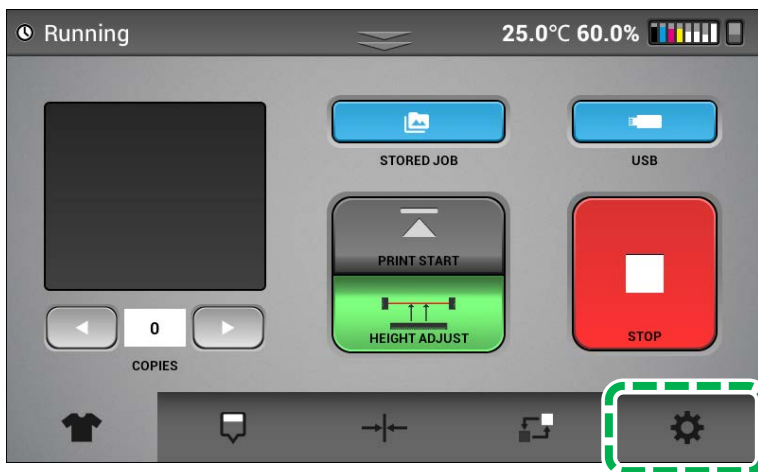


After Set Offset(X =40, Y=350)



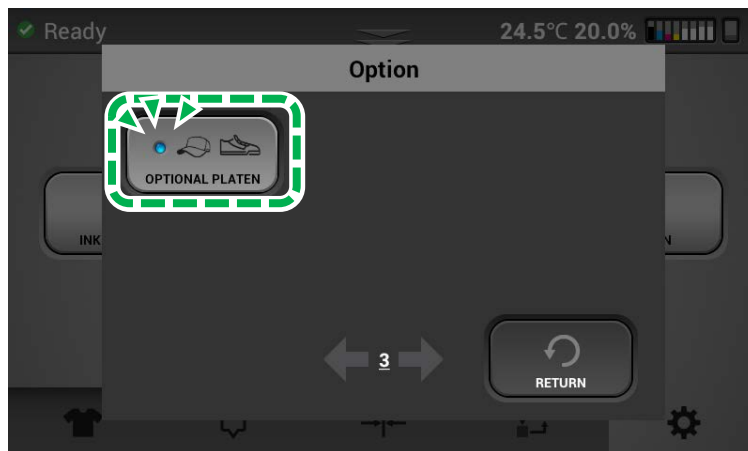
#### 4. Enable the Optional Platen.

a) Press the Setting tab on the touch panel of the machine.



b) Press [OPTION]

c) Go to the 3rd page and enable [Optional Platen].



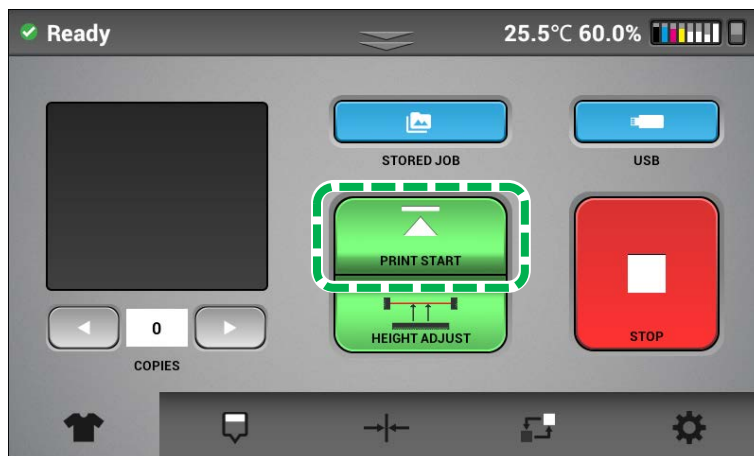


**5. Attaching the Optional Platen on the printer.****6. Adjusting the Height of the Optional Platen**


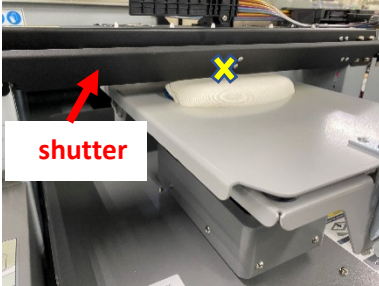
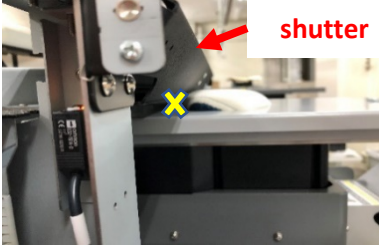
- a) Flatten the clothes set onto the optional platen as much as possible.
- b) Press [HEIGHT ADJUST].
- c) Select the Platen.



**IMPORTANT!** Select the same platen as the set platen (on the step 3 and 5).  
If you select a different platen, the platen may hit the printer body.

**7. User print image in Textile Productions server.****8. Press [PRINT START].**

# 2. Troubleshooting Guide

Issue/ Error	Causes	Solutions
<p>If SC920 occurred when the hat platen was set in the state shown in the photo on the right.</p>	<p>Things may be hitting the shutter.</p>  <p>↑ The hat is jammed at the entrance.</p>   <p>↑ If you open the front cover, it looks like the picture above.</p>	<p>(1)Please turn off the power first.</p> <p>(2)Next, gently pull the platen toward the front of the printer by your hands until the things no longer hit the shutter.</p> <p>(3)Then turn on the power again.</p> <p>And when you printing, make sure that the RIP setting and the platen selection match the actual platen type.</p>

## 3. Appendix

### 3.1. Revision history

Revision	Date issued	Description
Initial version	Jan, 2021	