



Ri-2000

How to update

4th Sep, 2020

Note:

If you installed the Data Collector Module, you can be easy to update.

About how to install the Data Collector Module, please see the user manual of Ri2000.

Below are the steps to update manually.

●How to update by manual

IMPORTANT!

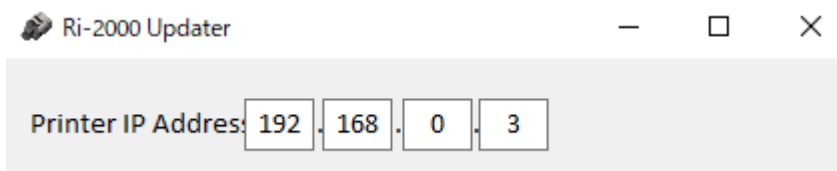
DO NOT DISCONNECT ANY CABLE (COMMUNICATION, POWER, SO ON) DURING UPDATING.

DO NOT DOWNGRADE, DOWNGRADE IS NOT GRANTED.

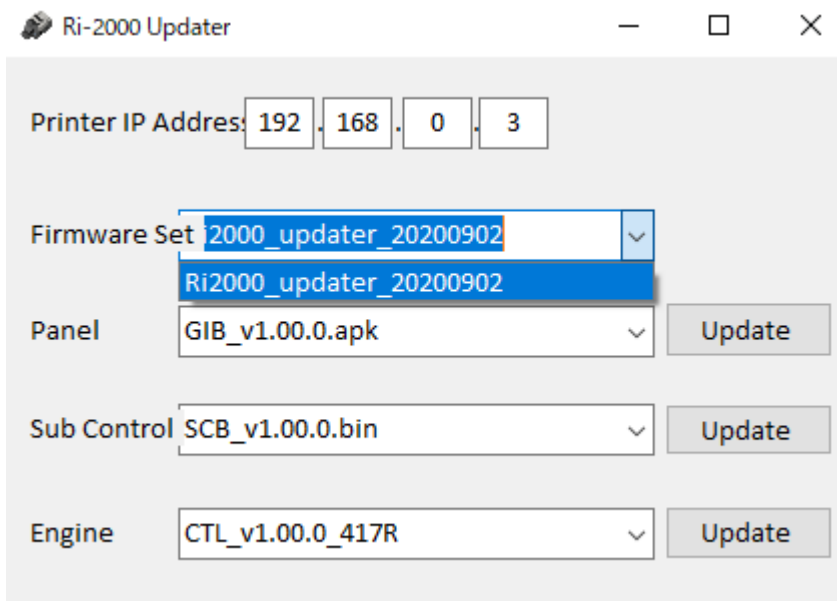
- 1) Run "Ri-2000 Updater.exe"



- 2) Key-in the printer IP address to update.



- 3) Select Firmware Set.



- 4) Click [Update] to send new firmware. Execute in order for all three contents.

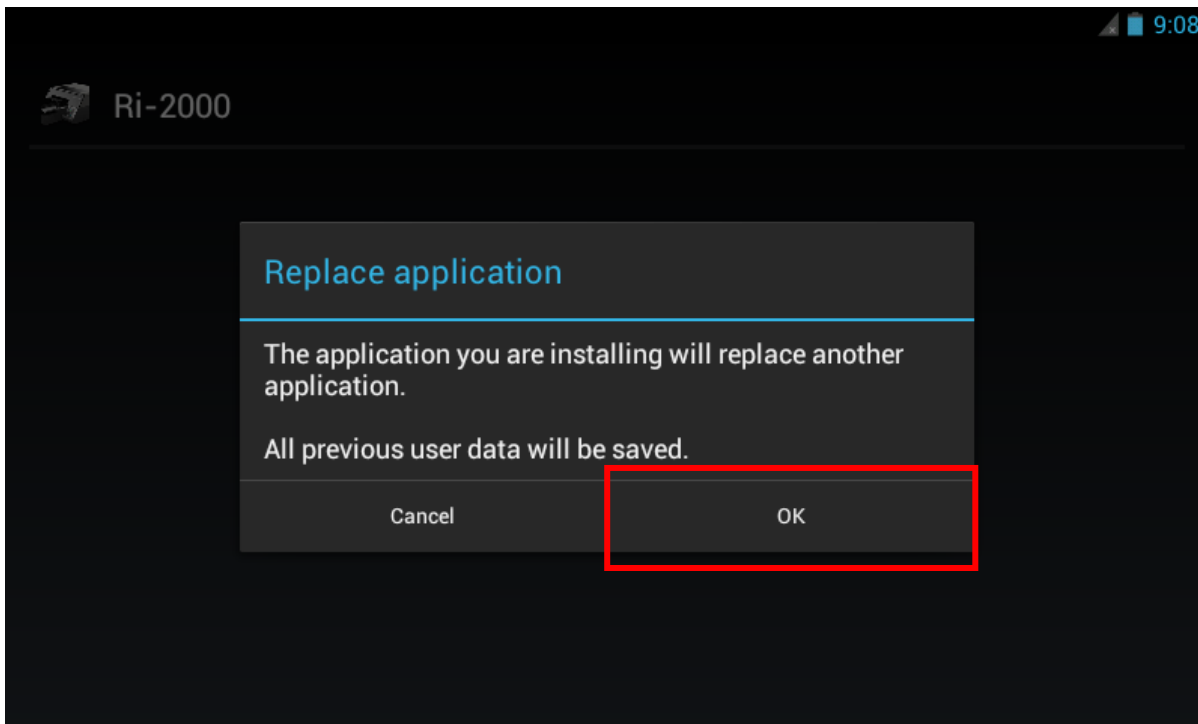
***Note: If you update latest firmware, you should update Panel(GIB) first.**

Panel(GIB) update → Sub Control(SCB) update → Engine(CTL) update

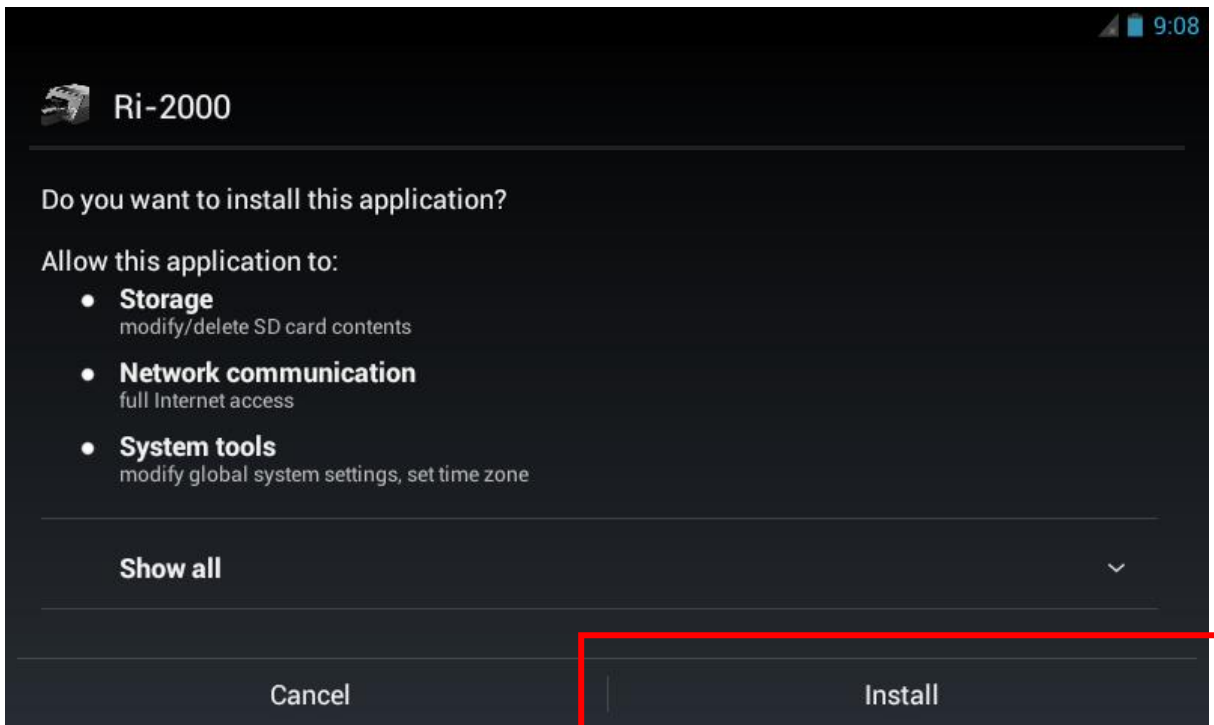
- 5) Sending firmware done and then update message is appeared on the machine.

- Update (Panel(GIB))

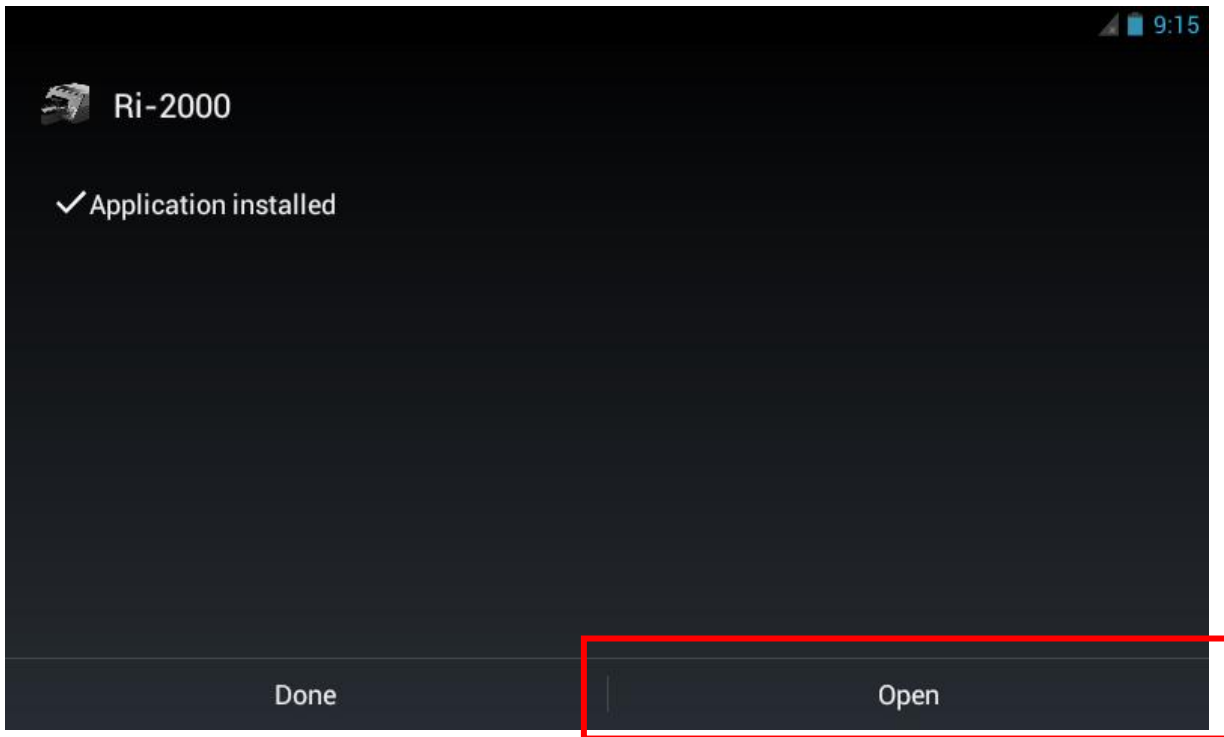
- Please select “OK” button.



- Please select “Install” button.



- Please select “Open” button.

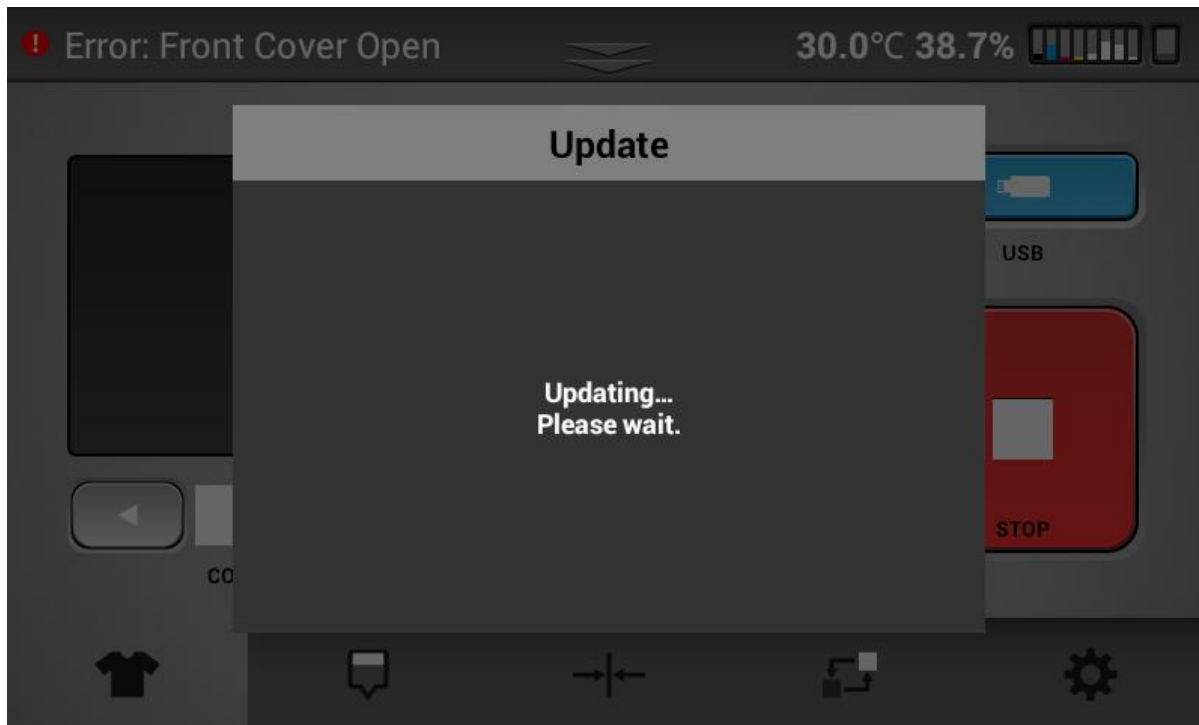


The panel is rebooted automatically, please wait until a printer is ready.

Please update Sub Control(SCB) and Engine(CTL) continuously.

- Update (Sub Control(SCB), Engine(CTL))

- Please wait until disappear the following display.



- If Update is done, Update Dialog is disappeared.



These completes all updates.