

# **Onboarding Webinar 2**

# Post Setup

## Onboarding Webinar 2

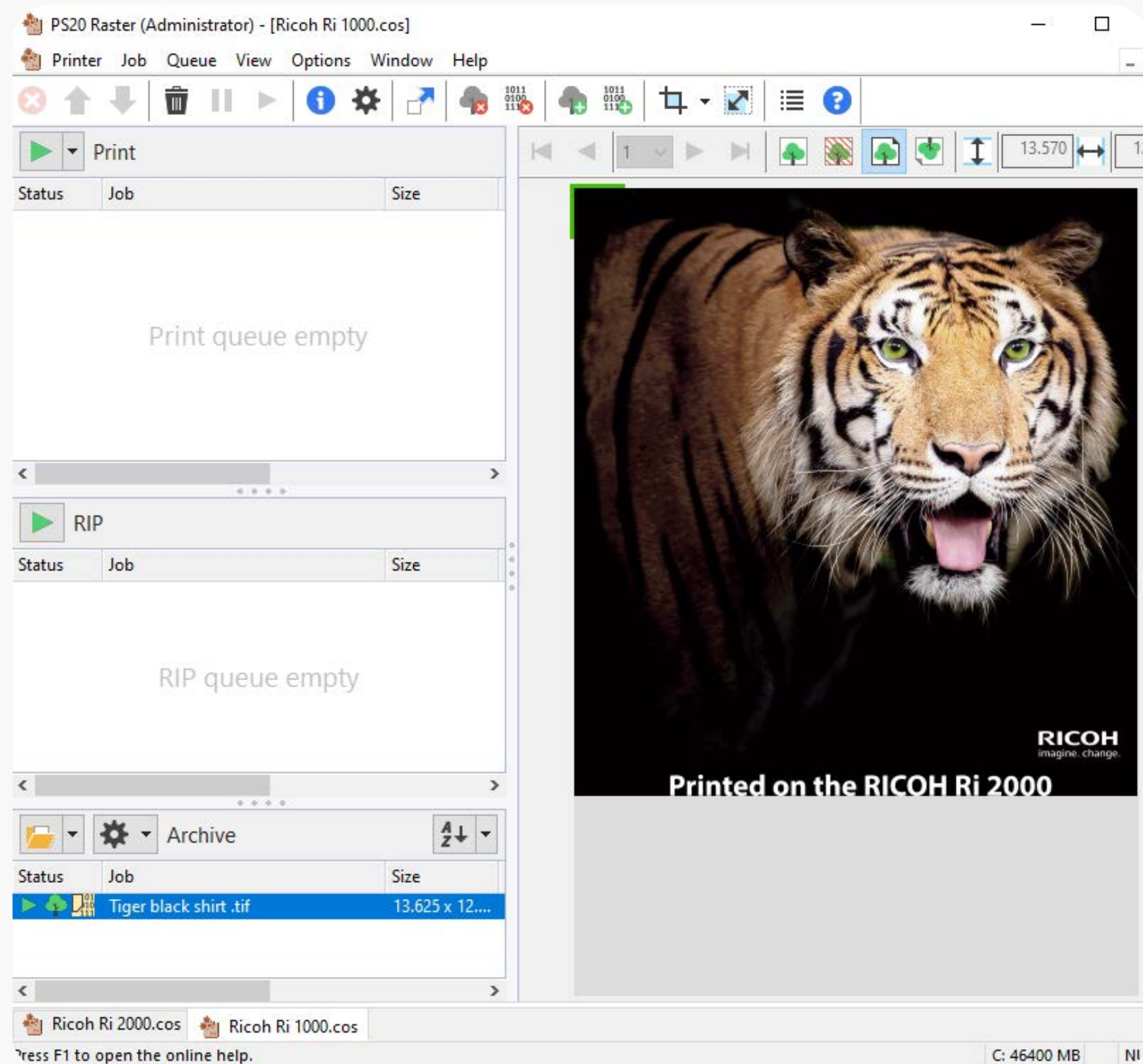
- Onboarding Process
- ColorGATE RIP
- Pretreatment Review
- Weekly Maintenance
- Log Extraction
- DTGU
- Printer Analytics Tool
- Prerequisites for next Onboarding

# RICOH DTG ONBOARDING



- **Checkpoint 2**
- **Completion of DTGU**
- **Remainder of Onboarding**

# ColorGATE

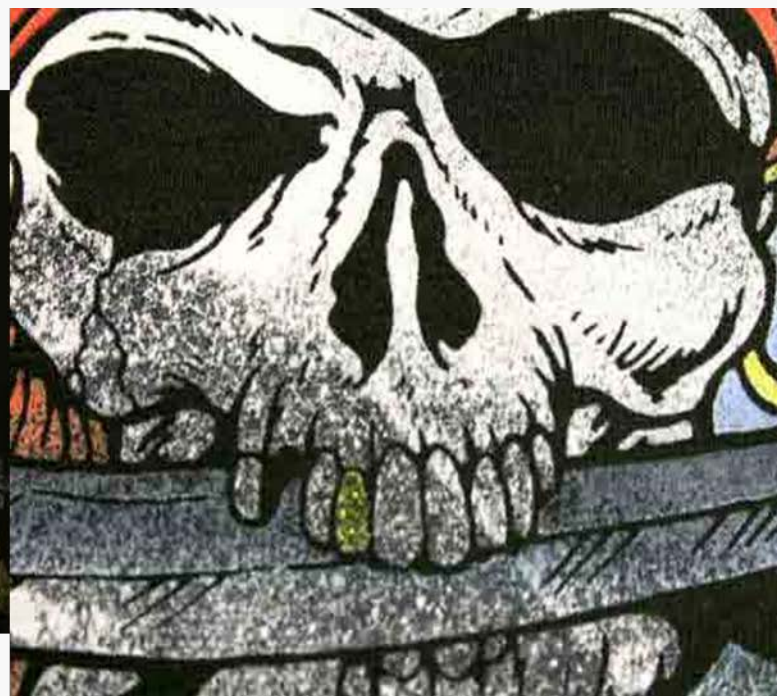


- **ColorGATE already installed**
- **Hot Folders**
- **Questions**

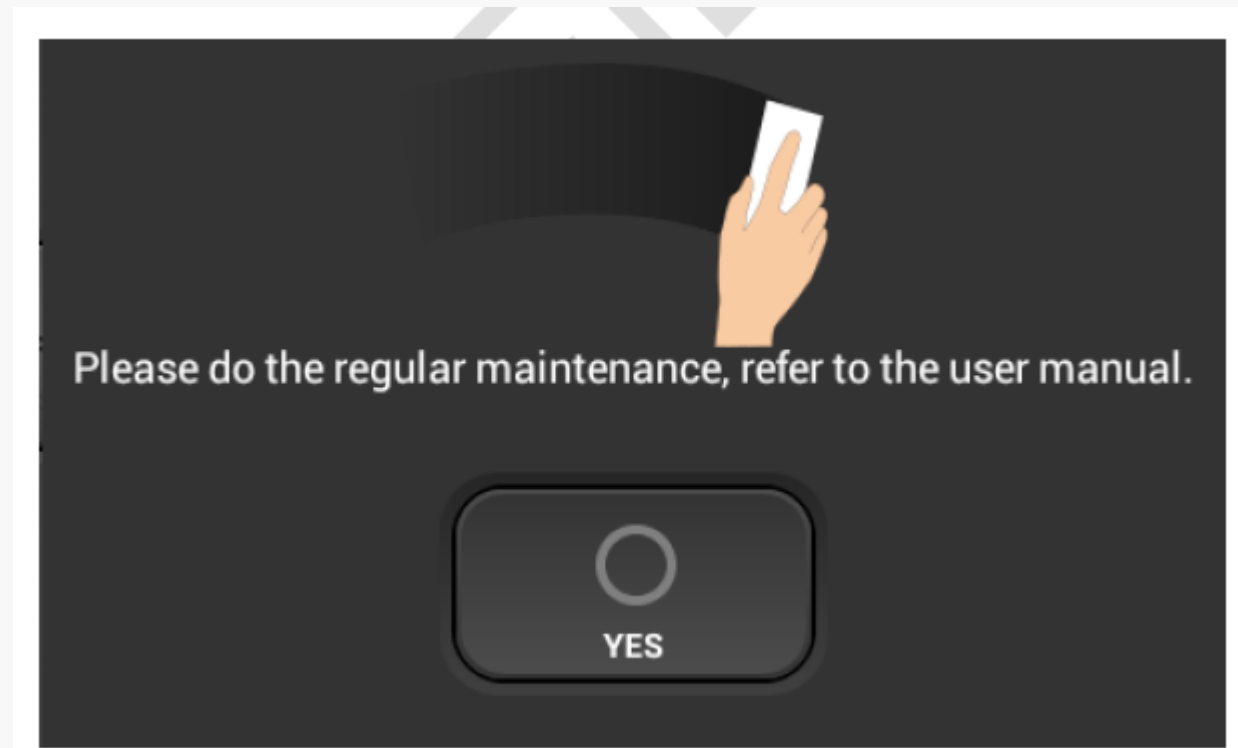
# PRETREATMENT



- When should you pretreat?
- Why is pretreatment needed?
- Difference between Wagner and Viper Mini.

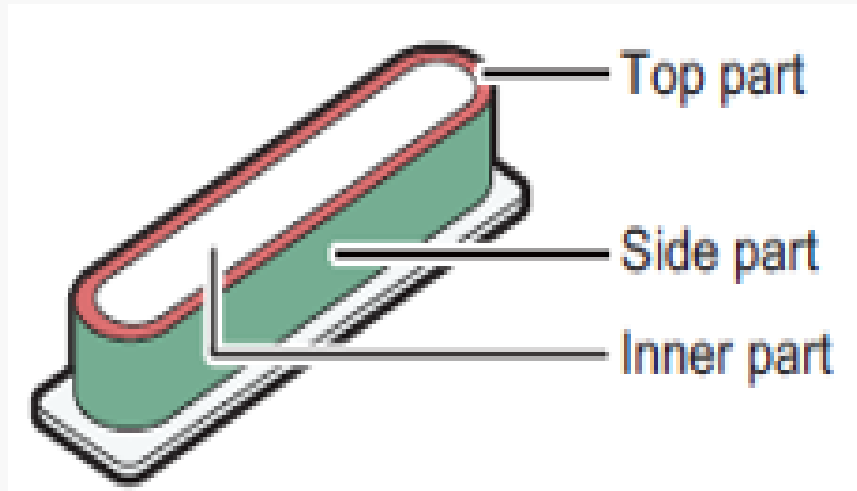


# WEEKLY MAINTENANCE



- Importance of weekly maintenance.
- Should have performed at least 2 by now.
- Questions – [onboarding@ricohdtg.com](mailto:onboarding@ricohdtg.com)

# WEEKLY MAINTENANCE TIPS



# PRINT LOGS

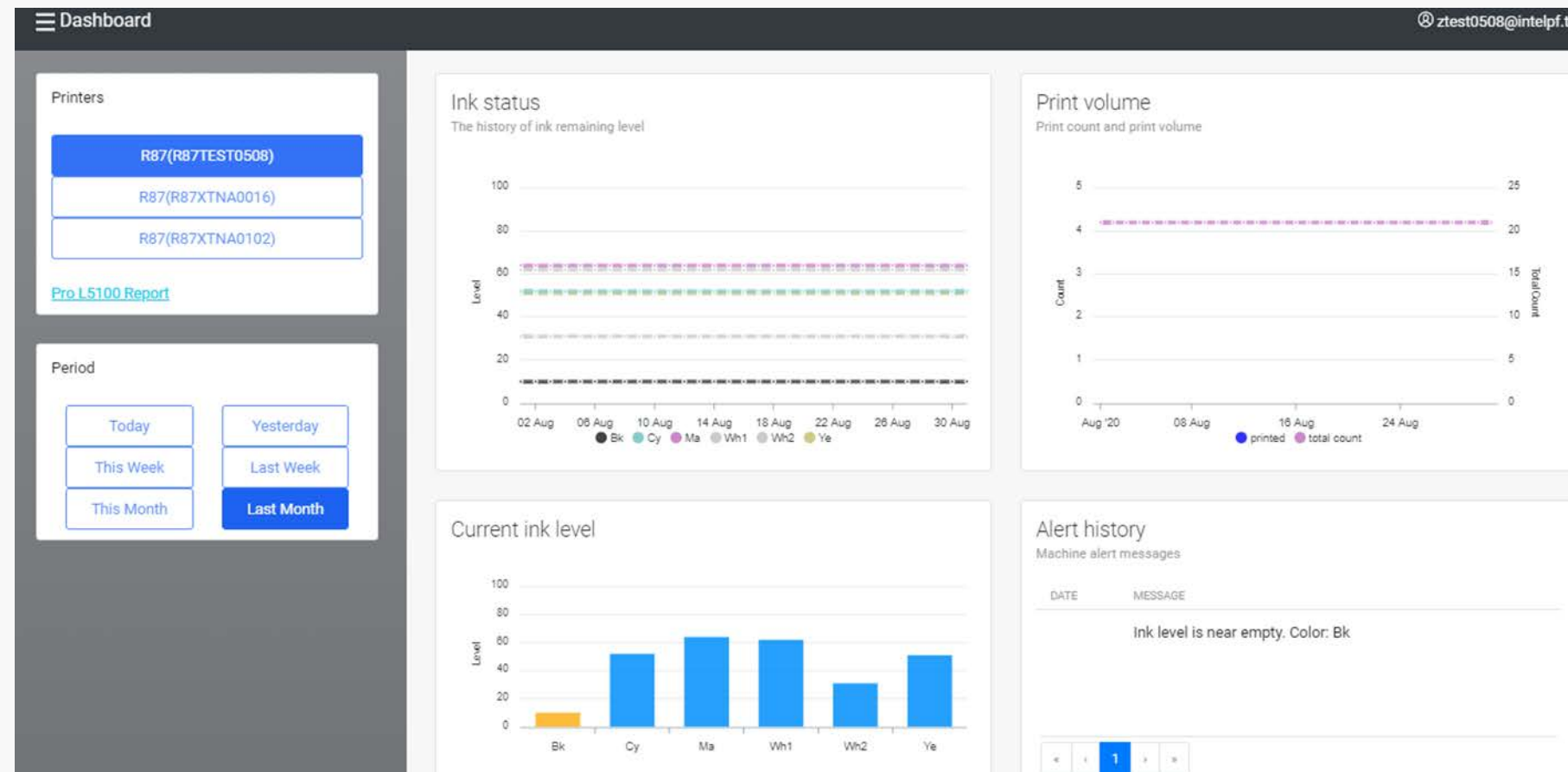
```
Search "total layer : 1" (47 hits in 15 files of 30 searched)
C:\Users\Jeremy\Downloads\logcat\logcat_R870XA00092_20210531.log (2 hits)
C:\Users\Jeremy\Downloads\logcat\logcat_R870XA00092_20210601.log (2 hits)
C:\Users\Jeremy\Downloads\logcat\logcat_R870XA00092_20210606.log (1 hit)
C:\Users\Jeremy\Downloads\logcat\logcat_R870XA00092_20210609.log (2 hits)
C:\Users\Jeremy\Downloads\logcat\logcat_R870XA00092_20210610.log (2 hits)
C:\Users\Jeremy\Downloads\logcat\logcat_R870XA00092_20210611.log (1 hit)
C:\Users\Jeremy\Downloads\logcat\logcat_R870XA00092_20210615.log (2 hits)
C:\Users\Jeremy\Downloads\logcat\logcat_R870XA00092_20210616.log (2 hits)
C:\Users\Jeremy\Downloads\logcat\logcat_R870XA00092_20210617.log (8 hits)
C:\Users\Jeremy\Downloads\logcat\logcat_R870XA00092_20210627.log (13 hits)
C:\Users\Jeremy\Downloads\logcat\logcat_R870XA00092_20210628.log (1 hit)
C:\Users\Jeremy\Downloads\logcat\logcat_R870XA00092_20210629.log (7 hits)
C:\Users\Jeremy\Downloads\logcat\logcat_R870XA00092_20210630.log (2 hits)
C:\Users\Jeremy\Downloads\logcat\logcat_R870XA00092_20210701.log (1 hit)
C:\Users\Jeremy\Downloads\logcat\logcat_R870XA00092_20210702.log (1 hit)
Search "Total layer : 2" (213 hits in 16 files of 30 searched)
C:\Users\Jeremy\Downloads\logcat\logcat_R870XA00092_20210531.log (4 hits)
C:\Users\Jeremy\Downloads\logcat\logcat_R870XA00092_20210601.log (4 hits)
C:\Users\Jeremy\Downloads\logcat\logcat_R870XA00092_20210602.log (2 hits)
C:\Users\Jeremy\Downloads\logcat\logcat_R870XA00092_20210603.log (14 hits)
C:\Users\Jeremy\Downloads\logcat\logcat_R870XA00092_20210605.log (4 hits)
C:\Users\Jeremy\Downloads\logcat\logcat_R870XA00092_20210606.log (10 hits)
C:\Users\Jeremy\Downloads\logcat\logcat_R870XA00092_20210608.log (16 hits)
C:\Users\Jeremy\Downloads\logcat\logcat_R870XA00092_20210609.log (14 hits)
C:\Users\Jeremy\Downloads\logcat\logcat_R870XA00092_20210611.log (12 hits)
C:\Users\Jeremy\Downloads\logcat\logcat_R870XA00092_20210615.log (4 hits)
C:\Users\Jeremy\Downloads\logcat\logcat_R870XA00092_20210616.log (8 hits)
C:\Users\Jeremy\Downloads\logcat\logcat_R870XA00092_20210617.log (43 hits)
C:\Users\Jeremy\Downloads\logcat\logcat_R870XA00092_20210629.log (11 hits)
C:\Users\Jeremy\Downloads\logcat\logcat_R870XA00092_20210630.log (2 hits)
C:\Users\Jeremy\Downloads\logcat\logcat_R870XA00092_20210701.log (2 hits)
C:\Users\Jeremy\Downloads\logcat\logcat_R870XA00092_20210702.log (63 hits)
```

- What are print logs?
- Print log information contents.
- Why will a Ricoh technician ask for them?
- How to obtain print logs?

```
C:\Users\████████\Downloads\logcat\logcat_R870XA00092_20210703.log (1 hit)
Line 15: 2021/07/03 00:55:55 StatusMgr: Machine Status Error = true
C:\Users\████████\Downloads\logcat\logcat_R870XA00092_20210704.log (1 hit)
Line 566: 2021/07/04 15:12:20 StatusMgr: Machine Status Error = false
```



# Printer Analytics Tool



- **What is the Printer Analytics Tool?**
- **How do I use it?**
- **Why is it beneficial?**

# RICOH DTG UNIVERSITY



**DTG UNIVERSITY**

Now available online for RICOH Ri 1000

Register: [RicohDTG.com/DTGU](http://RicohDTG.com/DTGU)

**RICOH**  
imagine. change.

RICOH  
RICOH Ri 1000

- If you have not attended DTGU yet, you must do so before Webinar 3.
- What if I am unable to attend the live session?

# RICOH DTG ONBOARDING CHECKPOINT 3 PREREQUISITES



- What do I need to do before attending the next webinar?
- What information will be covered in the next session?



For any questions about today's subjects  
please send your question to  
[onboarding@ricohdtg.com](mailto:onboarding@ricohdtg.com)