

# RICOH

## RICOH Ri 2000 Update Firmware



For safe and correct use, be sure to read the Safety Information in Safety Information and Quick Installation Guide before using the machine.

Version 1.0

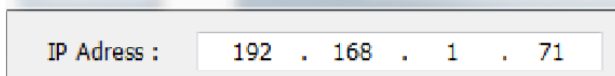
## Updating Firmware

**WARNING: Do not perform a firmware update unless the printer is in**

**Ready Status** 

### 6.1 Updating Firmware

1. Download the application from [www.riohdtg.com/downloads](http://www.riohdtg.com/downloads) - the zip package will include the GManger executable file which is the installer, GIB folder for the GIB firmware, CTL folder for the CTL firmware and SCB folder for the SCB firmware.
2. Open the Printer Manager Application
3. Enter the printer IP address for the printer needing to be updated

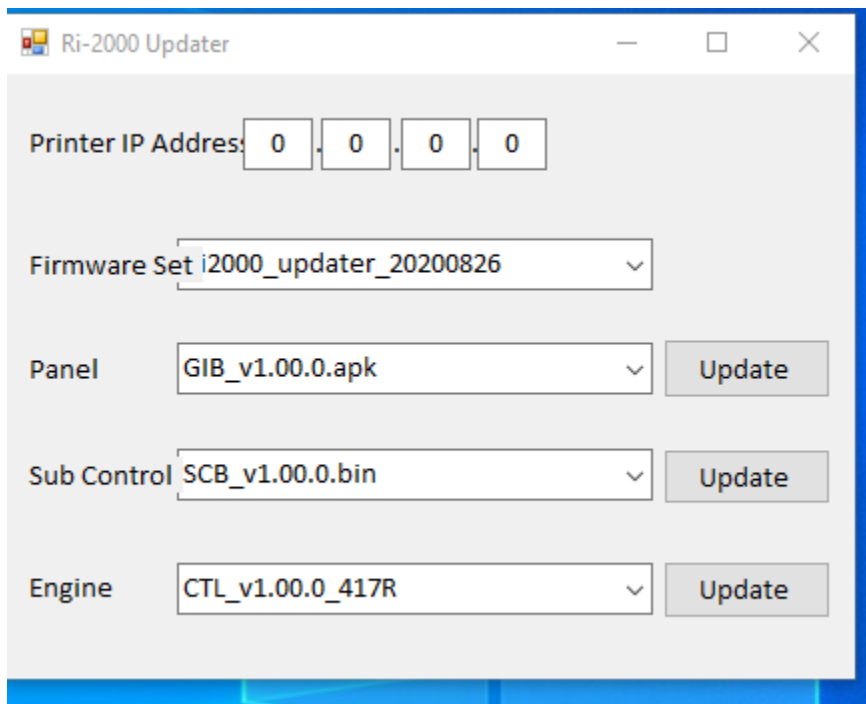


IP Address : 192 . 168 . 1 . 71

4. Select the version to use for the update

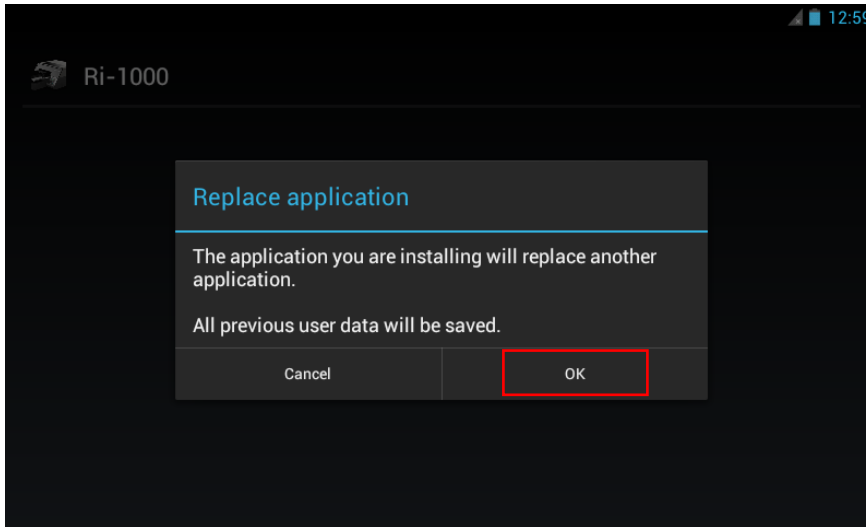
5. Click the GIB F/W Update button

**\*Note: always update GIB or control panel firmware first prior to any firmware updates. After the GIB then update the CTL. After the CTL then update the SCB\***

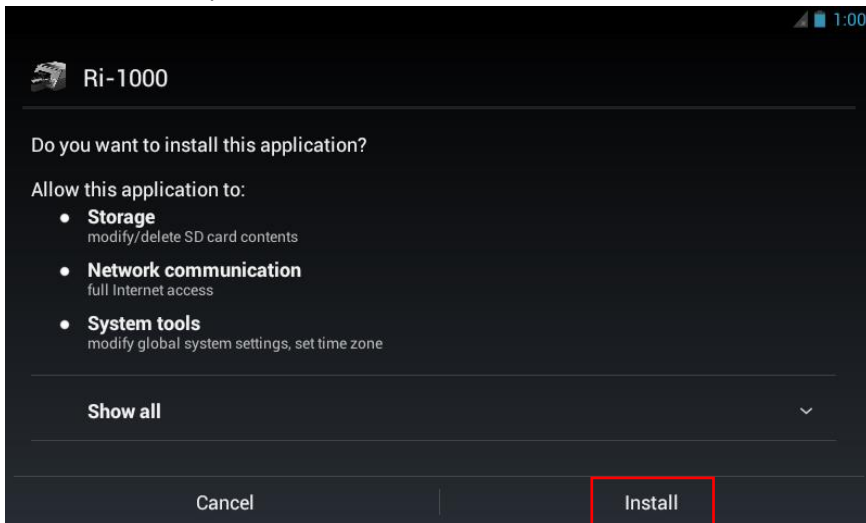


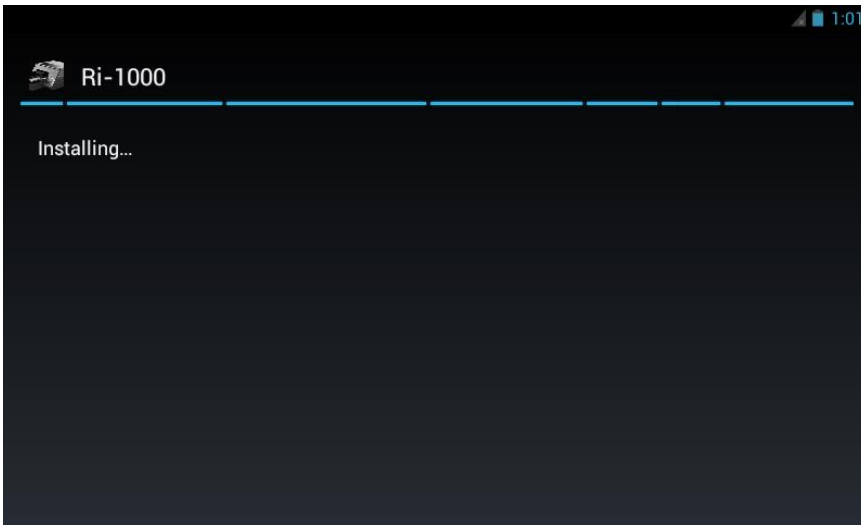
6. Wait for the printer to react to the update

7. Click **OK** - then select the START UPDATE button for the GIB. The screen on the printer will then show the image below

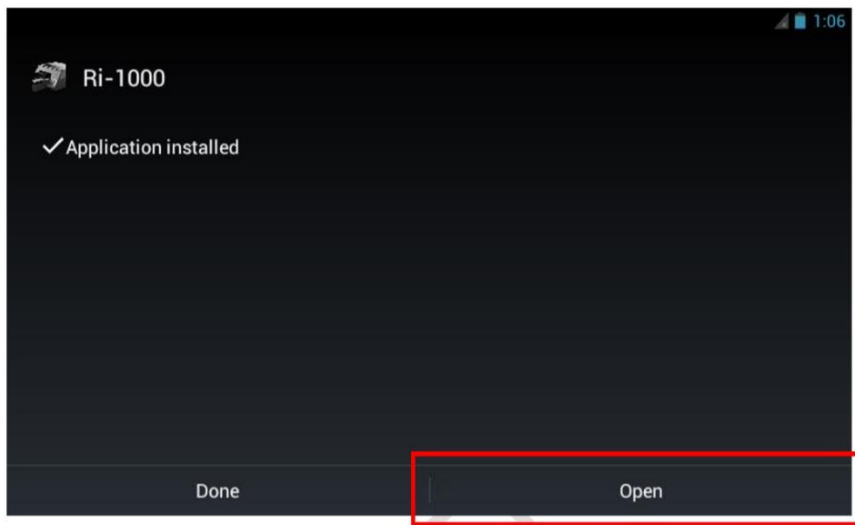


8. Click the **install** option on the screen to continue

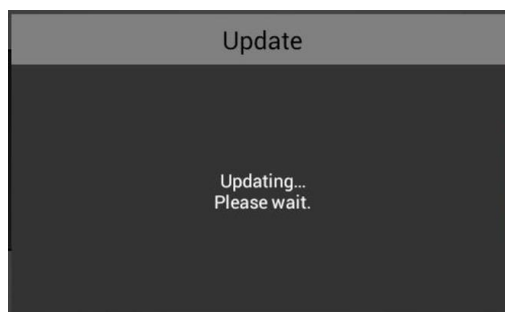




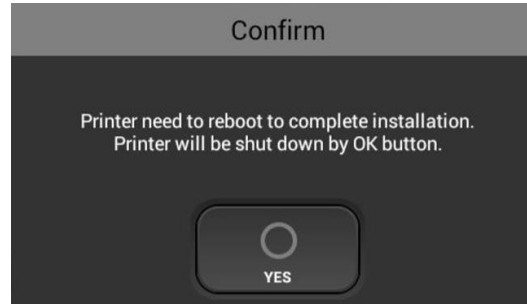
9. Then select **open**



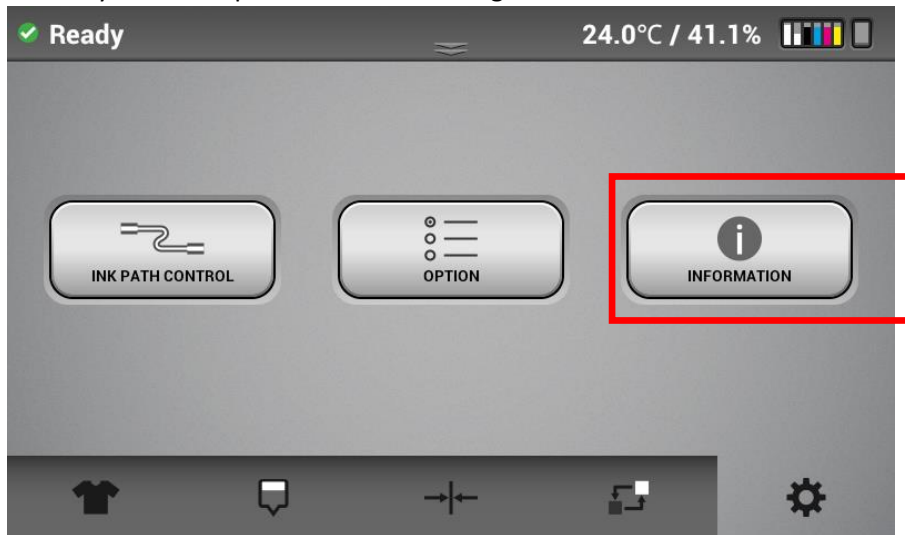
10. Then update the CTL firmware in the same manner. 1<sup>st</sup> press the CTL F/W Update button on the GManager. After the update complete message shows up select OK then START UPDATE and the screen below will show up while the printer is updating. Wait for the message to disappear before proceeding.



11. Then update the SCB firmware in the same manner. 1<sup>st</sup> press the SCB F/W Update button on the GManager. After the update complete message shows up select OK then START UPDATE and the screen below will show up.



12. Select Yes and the printer will restart to complete the update.
  - To verify that the update was successful go to the information section in the settings tab



- Verify the Firmware version matches the one installed

